

Product datasheet for **TA312874**

HSF1 Rabbit Polyclonal Antibody

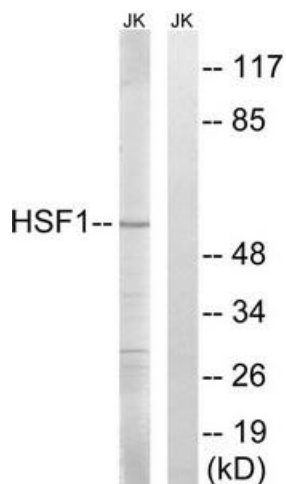
Product data:

Product Type:	Primary Antibodies
Applications:	WB
Recommended Dilution:	WB: 1:500~1:3000, ELISA: 1:40000
Reactivity:	Human, Mouse
Host:	Rabbit
Isotype:	IgG
Clonality:	Polyclonal
Immunogen:	The antiserum was produced against synthesized non-phosphopeptide derived from human HSF1 around the phosphorylation site of serine 121 (V-T-SP-V-S).
Formulation:	Phosphate buffered saline (without Mg ²⁺ and Ca ²⁺), pH 7.4, 150mM NaCl, 0.02% sodium azide and 50% glycerol.
Concentration:	lot specific
Purification:	The antibody was affinity-purified from rabbit antiserum by affinity-chromatography using epitope-specific immunogen.
Conjugation:	Unconjugated
Storage:	Store at -20°C as received.
Stability:	Stable for 12 months from date of receipt.
Gene Name:	heat shock transcription factor 1
Database Link:	NP_005517 Entrez Gene 15499 Mouse Entrez Gene 3297 Human Q00613
Synonyms:	HSTF1
Note:	HSF1 (Ab-121) antibody detects endogenous levels of total HSF1 protein
Protein Families:	Transcription Factors

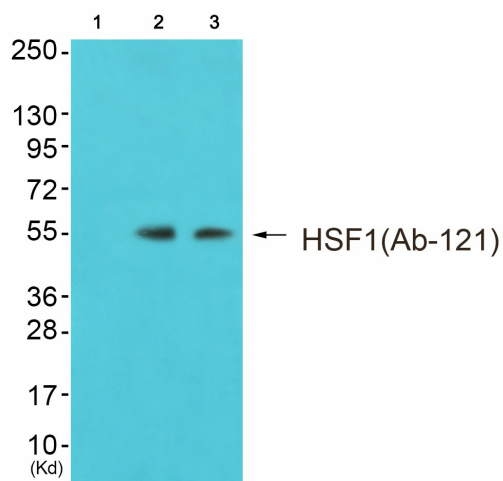


[View online »](#)

Product images:



Western blot analysis of extracts from Jurkat cells, using HSF1 (Ab-121) antibody. The lane on the right is treated with the synthesized peptide.



Western blot analysis of extracts from K562 cells (Lane 2) and 3T3 cells (Lane 3), using HSF1 (Ab-121) Antibody. The lane on the left is treated with synthesized peptide.