

## Product datasheet for **TA312859**

### IRS1 Rabbit Polyclonal Antibody

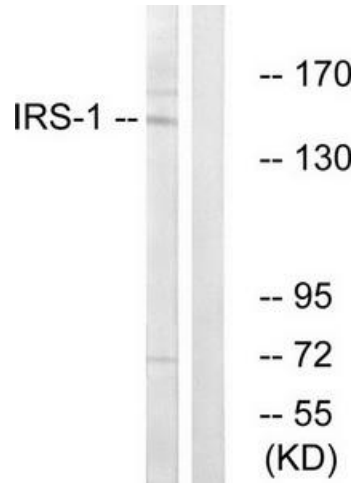
#### Product data:

Product Type:	Primary Antibodies
Applications:	IF, IHC, WB
Recommended Dilution:	WB: 1:500~1:3000, IHC: 1:50~1:100, IF: 1:100~1:500, ELISA: 1:20000
Reactivity:	Human, Mouse, Rat
Host:	Rabbit
Isotype:	IgG
Clonality:	Polyclonal
Immunogen:	The antiserum was produced against synthesized non-phosphopeptide derived from human IRS-1 around the phosphorylation site of serine 312 (A-T-SP-P-A).
Formulation:	Phosphate buffered saline (without Mg <sup>2+</sup> and Ca <sup>2+</sup> ), pH 7.4, 150mM NaCl, 0.02% sodium azide and 50% glycerol.
Concentration:	lot specific
Purification:	The antibody was affinity-purified from rabbit antiserum by affinity-chromatography using epitope-specific immunogen.
Conjugation:	Unconjugated
Storage:	Store at -20°C as received.
Stability:	Stable for 12 months from date of receipt.
Gene Name:	insulin receptor substrate 1
Database Link:	<a href="#">NP_005535</a> <a href="#">Entrez Gene 16367 Mouse</a> <a href="#">Entrez Gene 25467 Rat</a> <a href="#">Entrez Gene 3667 Human</a> <a href="#">P35568</a>
Synonyms:	HIRS-1
Note:	IRS-1 (Ab-312) antibody detects endogenous levels of total IRS-1 protein.
Protein Families:	Druggable Genome
Protein Pathways:	Adipocytokine signaling pathway, Insulin signaling pathway, Neurotrophin signaling pathway, Type II diabetes mellitus

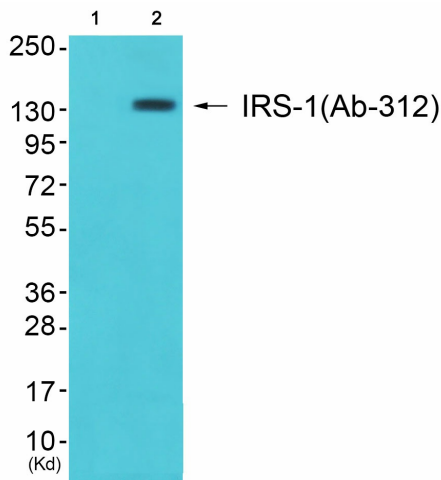


[View online »](#)

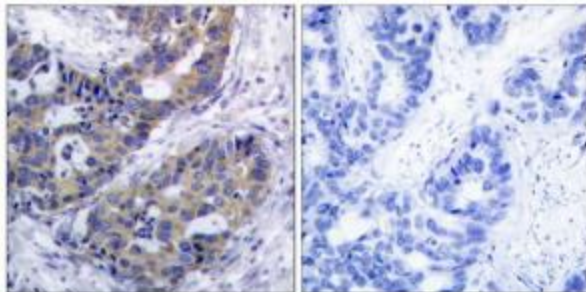
Product images:



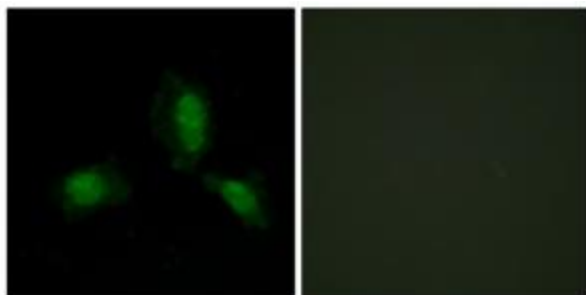
Western blot analysis of extracts from NIH-3T3 cells, using IRS-1 (Ab-312) Antibody. The lane on the right is treated with the synthesized peptide.



Western blot analysis of extracts from JK cells (Lane 2), using IRS-1 (Ab-312) Antibody. The lane on the left is treated with synthesized peptide.



Immunohistochemistry analysis of paraffin-embedded human breast carcinoma tissue, using IRS-1 (Ab-312) Antibody. The picture on the right is treated with the synthesized peptide.



Immunofluorescence analysis of HeLa cells, using IRS-1 (Ab-312) Antibody. The picture on the right is treated with the synthesized peptide.