

Product datasheet for **TA312856**

SHIP (INPP5D) Rabbit Polyclonal Antibody

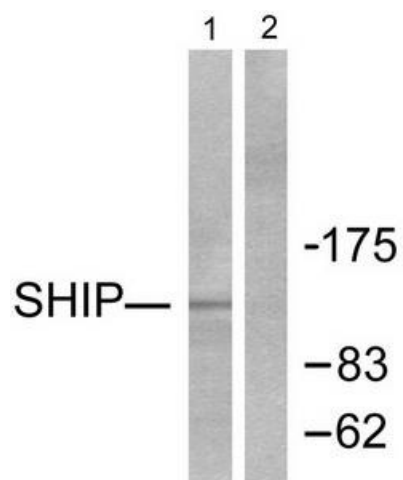
Product data:

Product Type:	Primary Antibodies
Applications:	WB
Recommended Dilution:	WB: 1:500~1:3000, ELISA: 1:40000
Reactivity:	Human, Mouse, Rat
Host:	Rabbit
Isotype:	IgG
Clonality:	Polyclonal
Immunogen:	The antiserum was produced against synthesized peptide derived from human SHIP.
Formulation:	Phosphate buffered saline (without Mg ²⁺ and Ca ²⁺), pH 7.4, 150mM NaCl, 0.02% sodium azide and 50% glycerol.
Concentration:	lot specific
Purification:	The antibody was affinity-purified from rabbit antiserum by affinity-chromatography using epitope-specific immunogen.
Conjugation:	Unconjugated
Storage:	Store at -20°C as received.
Stability:	Stable for 12 months from date of receipt.
Gene Name:	inositol polyphosphate-5-phosphatase D
Database Link:	NP_005532 Entrez Gene 16331 Mouse Entrez Gene 54259 Rat Entrez Gene 3635 Human Q92835
Synonyms:	hp51CN; p150Ship; SHIP; SHIP-1; SHIP1; SIP-145
Note:	SHIP antibody detects endogenous levels of total SHIP protein.
Protein Families:	Druggable Genome
Protein Pathways:	B cell receptor signaling pathway, Fc epsilon RI signaling pathway, Fc gamma R-mediated phagocytosis, Insulin signaling pathway, Phosphatidylinositol signaling system



[View online »](#)

Product images:



Western blot analysis of extracts from Jurkat cells, treated with PMA (1ng/ml, 15mins), using SHIP antibody (#TA312856). The lane on the right is treated with the synthesized peptide.