

Product datasheet for **TA312854**

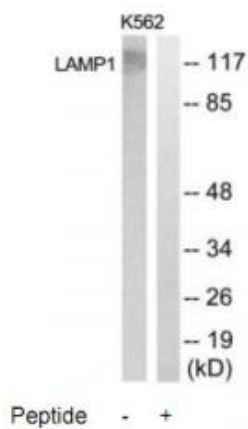
LAMP1 Rabbit Polyclonal Antibody

Product data:

Product Type:	Primary Antibodies
Applications:	WB
Recommended Dilution:	WB: 1:500~1:3000, ELISA: 1:40000
Reactivity:	Human
Host:	Rabbit
Isotype:	IgG
Clonality:	Polyclonal
Immunogen:	The antiserum was produced against synthesized peptide derived from internal of human LAMP1.
Formulation:	Phosphate buffered saline (without Mg ²⁺ and Ca ²⁺), pH 7.4, 150mM NaCl, 0.02% sodium azide and 50% glycerol.
Concentration:	lot specific
Purification:	The antibody was affinity-purified from rabbit antiserum by affinity-chromatography using epitope-specific immunogen.
Conjugation:	Unconjugated
Storage:	Store at -20°C as received.
Stability:	Stable for 12 months from date of receipt.
Gene Name:	lysosomal associated membrane protein 1
Database Link:	NP_005552 Entrez Gene 3916 Human P11279
Synonyms:	CD107a; LAMPA; LGP120
Note:	LAMP1 antibody detects endogenous levels of total LAMP1 protein.
Protein Families:	ES Cell Differentiation/IPS, Transmembrane
Protein Pathways:	Lysosome



[View online »](#)

Product images:

Western blot analysis of extracts from K562, Jurkat, HepG2, HuvEc, HeLa and COLO205 cells, using LAMP1 antibody. The lane on the right is treated with the synthesized peptide.