

## Product datasheet for **TA312851**

### LIM1 (LHX1) Rabbit Polyclonal Antibody

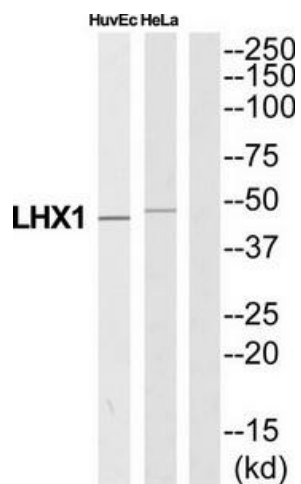
#### Product data:

Product Type:	Primary Antibodies
Applications:	WB
Recommended Dilution:	WB: 1:500~1:3000, ELISA: 1:40000
Reactivity:	Human, Mouse, Rat
Host:	Rabbit
Isotype:	IgG
Clonality:	Polyclonal
Immunogen:	The antiserum was produced against synthesized peptide derived from Internal of human LHX1.
Formulation:	Phosphate buffered saline (without Mg <sup>2+</sup> and Ca <sup>2+</sup> ), pH 7.4, 150mM NaCl, 0.02% sodium azide and 50% glycerol.
Concentration:	lot specific
Purification:	The antibody was affinity-purified from rabbit antiserum by affinity-chromatography using epitope-specific immunogen.
Conjugation:	Unconjugated
Storage:	Store at -20°C as received.
Stability:	Stable for 12 months from date of receipt.
Gene Name:	LIM homeobox 1
Database Link:	<a href="#">NP_005559</a> <a href="#">Entrez Gene 16869 MouseEntrez Gene 257634 RatEntrez Gene 3975 Human P48742</a>
Synonyms:	LIM-1; LIM1
Note:	LHX1 antibody detects endogenous levels of total LHX1 protein.
Protein Families:	ES Cell Differentiation/IPS, Transcription Factors



[View online »](#)

## Product images:



Western blot analysis of extracts from HuvEc/HeLa cells, using LHX1 antibody. The lane on the right is treated with the synthesized peptide.