

Product datasheet for **TA312841**

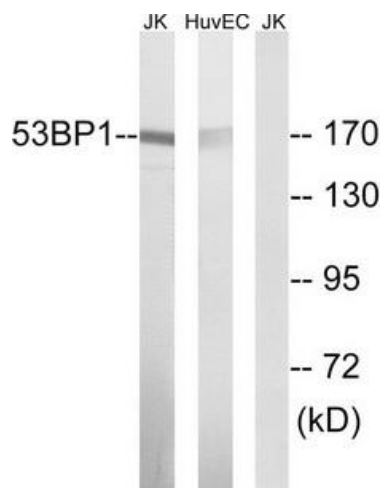
53BP1 (TP53BP1) Rabbit Polyclonal Antibody

Product data:

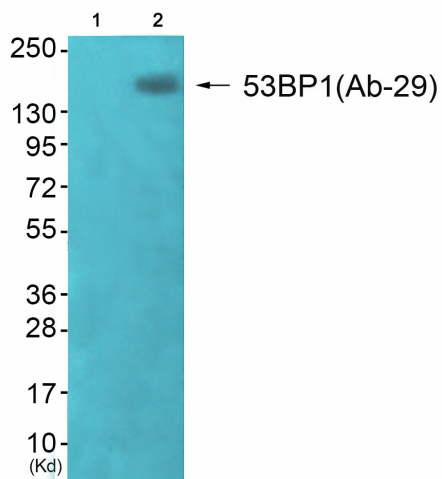
Product Type:	Primary Antibodies
Applications:	WB
Recommended Dilution:	WB: 1:500~1:3000, ELISA: 1:10000
Reactivity:	Human, Mouse
Host:	Rabbit
Isotype:	IgG
Clonality:	Polyclonal
Immunogen:	The antiserum was produced against synthesized peptide derived from Internal of human 53BP1.
Formulation:	Phosphate buffered saline (without Mg ²⁺ and Ca ²⁺), pH 7.4, 150mM NaCl, 0.02% sodium azide and 50% glycerol.
Concentration:	lot specific
Purification:	The antibody was affinity-purified from rabbit antiserum by affinity-chromatography using epitope-specific immunogen.
Conjugation:	Unconjugated
Storage:	Store at -20°C as received.
Stability:	Stable for 12 months from date of receipt.
Gene Name:	tumor protein p53 binding protein 1
Database Link:	NP_005648 Entrez Gene 7158 Human Q12888
Synonyms:	53BP1; p202
Note:	53BP1 (Ab-29) antibody detects endogenous levels of total 53BP1 protein.
Protein Families:	Druggable Genome, Transcription Factors



[View online »](#)

Product images:


Western blot analysis of extracts from Jurkat cells and HUVEC cells, using 53BP1 (Ab-29) antibody. The lane on the right is treated with the synthesized peptide.



Western blot analysis of extracts from 293 cells (Lane 2), using 53BP1 (Ab-29) Antibody. The lane on the left is treated with synthesized peptide.