

Product datasheet for **TA312840**

G3BP (G3BP1) Rabbit Polyclonal Antibody

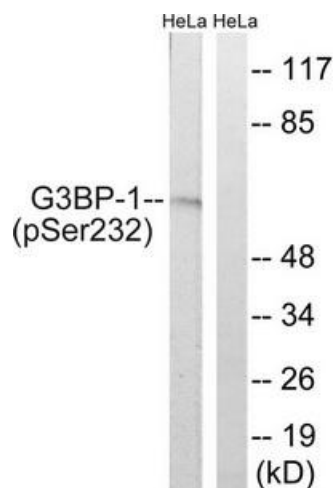
Product data:

Product Type:	Primary Antibodies
Applications:	IHC, WB
Recommended Dilution:	WB: 1:500~1:3000, IHC: 1:50~1:100, ELISA: 1:1000
Reactivity:	Human
Modifications:	Phospho-specific
Host:	Rabbit
Isotype:	IgG
Clonality:	Polyclonal
Immunogen:	The antiserum was produced against synthesized phosphopeptide derived from human G3BP-1 around the phosphorylation site of serine 232 (S-S-SP-P-A).
Formulation:	Phosphate buffered saline (without Mg ²⁺ and Ca ²⁺), pH 7.4, 150mM NaCl, 0.02% sodium azide and 50% glycerol.
Concentration:	lot specific
Purification:	The antibody was affinity-purified from rabbit antiserum by affinity-chromatography using epitope-specific immunogen.
Conjugation:	Unconjugated
Storage:	Store at -20°C as received.
Stability:	Stable for 12 months from date of receipt.
Gene Name:	G3BP stress granule assembly factor 1
Database Link:	NP_005745 Entrez Gene 10146 Human Q13283
Synonyms:	G3BP; HDH-VIII
Note:	G3BP-1 (phospho-Ser232) antibody detects endogenous levels of G3BP-1 only when phosphorylated at serine 232.
Protein Families:	Druggable Genome

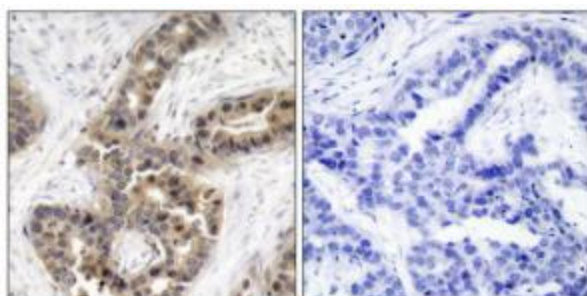


[View online »](#)

Product images:



Western blot analysis of extracts from HeLa cells, using G3BP-1 (phospho-Ser232) antibody. The lane on the right is treated with the synthesized peptide.



Immunohistochemical analysis of paraffin-embedded human breast carcinoma tissue, using G3BP-1 (phospho-Ser232) antibody. The picture on the right is treated with the synthesized peptide.