

Product datasheet for **TA312838**

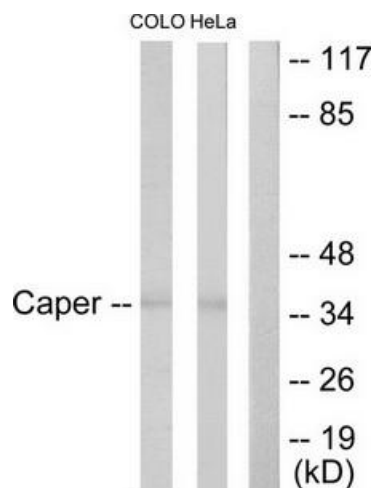
ATP6IP2 (ATP6AP2) Rabbit Polyclonal Antibody

Product data:

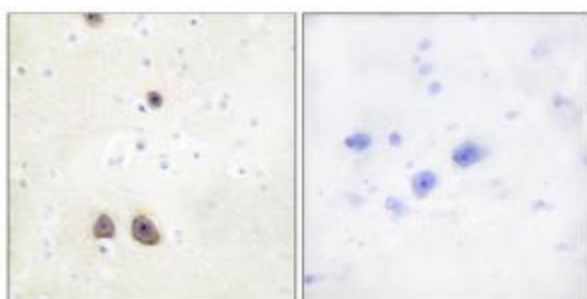
Product Type:	Primary Antibodies
Applications:	IF, IHC, WB
Recommended Dilution:	WB: 1:500~1:3000, IHC: 1:50~1:100, IF: 1:100~1:500, ELISA: 1:20000
Reactivity:	Human, Mouse, Rat
Host:	Rabbit
Isotype:	IgG
Clonality:	Polyclonal
Immunogen:	The antiserum was produced against synthesized peptide derived from Internal of human Caper.
Formulation:	Phosphate buffered saline (without Mg ²⁺ and Ca ²⁺), pH 7.4, 150mM NaCl, 0.02% sodium azide and 50% glycerol.
Concentration:	lot specific
Purification:	The antibody was affinity-purified from rabbit antiserum by affinity-chromatography using epitope-specific immunogen.
Conjugation:	Unconjugated
Storage:	Store at -20°C as received.
Stability:	Stable for 12 months from date of receipt.
Gene Name:	ATPase H ⁺ transporting accessory protein 2
Database Link:	NP_005756 Entrez Gene 70495 MouseEntrez Gene 302526 RatEntrez Gene 10159 Human O75787
Synonyms:	APT6M8-9; ATP6IP2; ATP6M8-9; ELDF10; HT028; M8-9; MRXE; MRXSH; MSTP009; PRR; RENR; XMRE; XPDS
Note:	Caper antibody detects endogenous levels of total Caper protein.
Protein Families:	Druggable Genome, Transmembrane



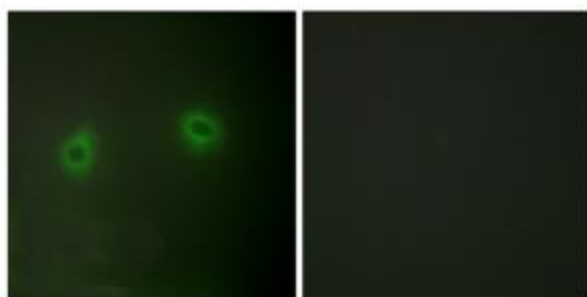
[View online »](#)

Product images:


Western blot analysis of extracts from COLO205 cells and HeLa cells, using Caper antibody. The lane on the right is treated with the synthesized peptide.



Immunohistochemistry analysis of paraffin-embedded human brain tissue using Caper antibody. The picture on the right is treated with the synthesized peptide.



Immunofluorescence analysis of HeLa cells, using Caper antibody. The picture on the right is treated with the synthesized peptide.