

Product datasheet for **TA312837**

BCAS2 Rabbit Polyclonal Antibody

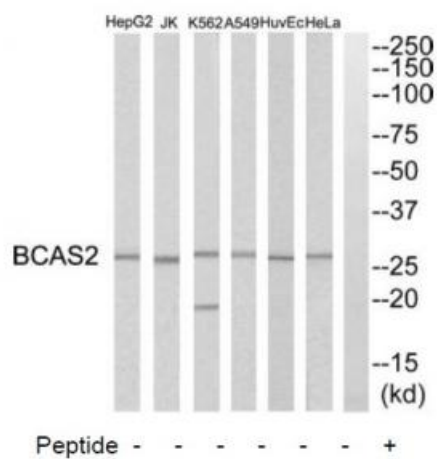
Product data:

Product Type:	Primary Antibodies
Applications:	WB
Recommended Dilution:	WB: 1:500~1:3000, ELISA: 1:5000
Reactivity:	Human, Mouse, Rat
Host:	Rabbit
Isotype:	IgG
Clonality:	Polyclonal
Immunogen:	The antiserum was produced against synthesized peptide derived from C-terminal of human BCAS2.
Formulation:	Phosphate buffered saline (without Mg ²⁺ and Ca ²⁺), pH 7.4, 150mM NaCl, 0.02% sodium azide and 50% glycerol.
Concentration:	lot specific
Purification:	The antibody was affinity-purified from rabbit antiserum by affinity-chromatography using epitope-specific immunogen.
Conjugation:	Unconjugated
Storage:	Store at -20°C as received.
Stability:	Stable for 12 months from date of receipt.
Gene Name:	breast carcinoma amplified sequence 2
Database Link:	NP_005863 Entrez Gene 68183 MouseEntrez Gene 295334 RatEntrez Gene 10286 Human O75934
Synonyms:	DAM1; Snt309; SPF27
Note:	BCAS2 antibody detects endogenous levels of total BCAS2 protein.
Protein Pathways:	Spliceosome



[View online »](#)

Product images:



Western blot analysis of extracts from HeLa cells, HepG2 cells, Huvec cells, A549 cells, K562 cells and Jurkat cells, using BCAS2 antibody. The lane on the right is treated with the synthesized peptide.