

Product datasheet for **TA312835**

SMAD1 Rabbit Polyclonal Antibody

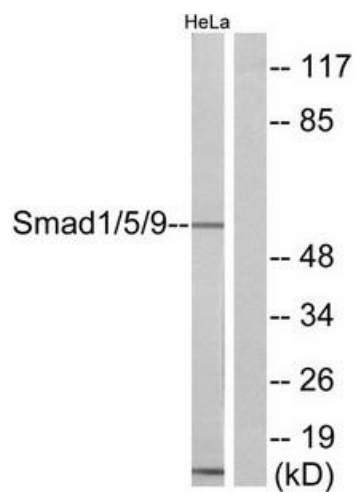
Product data:

Product Type:	Primary Antibodies
Applications:	WB
Recommended Dilution:	WB: 1:500~1:3000, ELISA: 1:10000
Reactivity:	Human, Mouse, Rat
Host:	Rabbit
Isotype:	IgG
Clonality:	Polyclonal
Immunogen:	The antiserum was produced against synthesized peptide derived from N-terminal of human Smad1/5/9.
Formulation:	Phosphate buffered saline (without Mg ²⁺ and Ca ²⁺), pH 7.4, 150mM NaCl, 0.02% sodium azide and 50% glycerol.
Concentration:	lot specific
Purification:	The antibody was affinity-purified from rabbit antiserum by affinity-chromatography using epitope-specific immunogen.
Conjugation:	Unconjugated
Storage:	Store at -20°C as received.
Stability:	Stable for 12 months from date of receipt.
Gene Name:	SMAD family member 1
Database Link:	NP_005891 Entrez Gene 17125 MouseEntrez Gene 25671 RatEntrez Gene 4086 Human Q15797
Synonyms:	BSP-1; BSP1; JV4-1; JV41; MADH1; MADR1
Note:	Smad1/5/9 antibody detects endogenous levels of total Smad1/5/9 protein.
Protein Families:	Cancer stem cells, Druggable Genome, ES Cell Differentiation/IPS, Stem cell relevant signaling - JAK/STAT signaling pathway, Stem cell relevant signaling - TGFb/BMP signaling pathway, Transcription Factors
Protein Pathways:	TGF-beta signaling pathway



[View online »](#)

Product images:



Western blot analysis of extracts from HeLa cells, using Smad1/5/9 antibody. The lane on the right is treated with the synthesized peptide.