

Product datasheet for **TA312834**

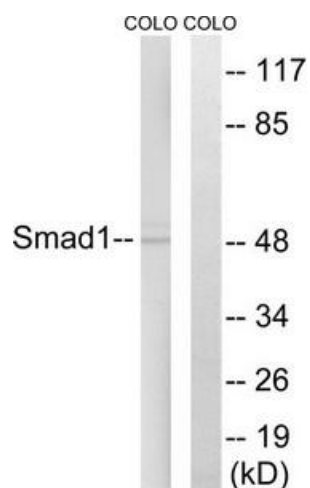
SMAD1 Rabbit Polyclonal Antibody

Product data:

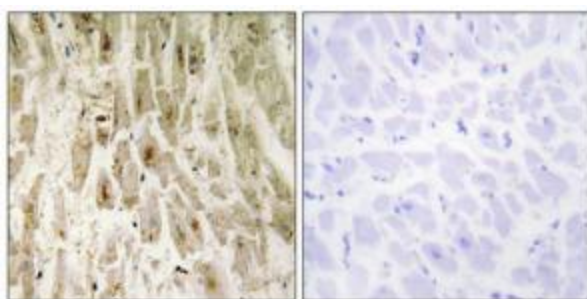
| | |
|-----------------------|---|
| Product Type: | Primary Antibodies |
| Applications: | IHC, WB |
| Recommended Dilution: | WB: 1:500~1:3000, IHC: 1:50~1:100, ELISA: 1:5000 |
| Reactivity: | Human, Mouse, Rat |
| Host: | Rabbit |
| Isotype: | IgG |
| Clonality: | Polyclonal |
| Immunogen: | The antiserum was produced against synthesized non-phosphopeptide derived from human Smad1 around the phosphorylation site of serine 465 (I-S-S-V-SP). |
| Formulation: | Phosphate buffered saline (without Mg ²⁺ and Ca ²⁺), pH 7.4, 150mM NaCl, 0.02% sodium azide and 50% glycerol. |
| Concentration: | lot specific |
| Purification: | The antibody was affinity-purified from rabbit antiserum by affinity-chromatography using epitope-specific immunogen. |
| Conjugation: | Unconjugated |
| Storage: | Store at -20°C as received. |
| Stability: | Stable for 12 months from date of receipt. |
| Gene Name: | SMAD family member 1 |
| Database Link: | NP_005891 Entrez Gene 17125 Mouse Entrez Gene 25671 Rat Entrez Gene 4086 Human Q15797 |
| Synonyms: | BSP-1; BSP1; JV4-1; JV41; MADH1; MADR1 |
| Note: | Smad1 (Ab-465) antibody detects endogenous levels of total Smad1 protein. |
| Protein Families: | Cancer stem cells, Druggable Genome, ES Cell Differentiation/IPS, Stem cell relevant signaling - JAK/STAT signaling pathway, Stem cell relevant signaling - TGFb/BMP signaling pathway, Transcription Factors |
| Protein Pathways: | TGF-beta signaling pathway |



[View online »](#)

Product images:

Western blot analysis of extracts from COS7 cells, treated with EGF (200ng/ml, 15mins), using Smad1 (Ab-465) antibody. The lane on the right is treated with the synthesized peptide.



Immunohistochemistry analysis of paraffin-embedded human breast carcinoma tissue using Smad1 (Ab-465) antibody. The picture on the right is treated with the synthesized peptide.