

Product datasheet for **TA312832**

SMAD1 Rabbit Polyclonal Antibody

Product data:

Product Type:	Primary Antibodies
Applications:	IHC, WB
Recommended Dilution:	WB: 1:500~1:3000, IHC: 1:50~1:100, ELISA: 1:20000
Reactivity:	Human, Mouse, Rat
Modifications:	Phospho-specific
Host:	Rabbit
Isotype:	IgG
Clonality:	Polyclonal
Immunogen:	The antiserum was produced against synthesized phosphopeptide derived from human Smad1 around the phosphorylation site of serine 465 (I-S-S-V-SP)
Formulation:	Phosphate buffered saline (without Mg ²⁺ and Ca ²⁺), pH 7.4, 150mM NaCl, 0.02% sodium azide and 50% glycerol.
Concentration:	lot specific
Purification:	The antibody was affinity-purified from rabbit antiserum by affinity-chromatography using epitope-specific immunogen.
Conjugation:	Unconjugated
Storage:	Store at -20°C as received.
Stability:	Stable for 12 months from date of receipt.
Gene Name:	SMAD family member 1
Database Link:	NP_005891 Entrez Gene 17125 Mouse Entrez Gene 25671 Rat Entrez Gene 4086 Human Q15797
Synonyms:	BSP-1; BSP1; JV4-1; JV41; MADH1; MADR1
Note:	Smad1 (Phospho-Ser465) antibody detects endogenous levels of Smad1 only when phosphorylated at serine 465.

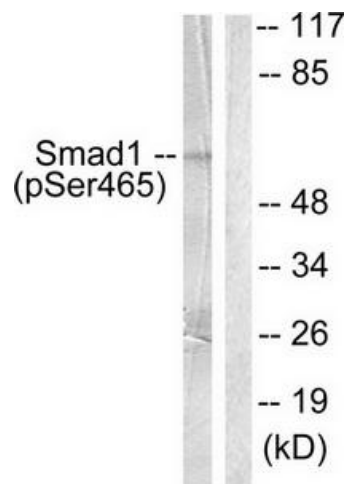


[View online »](#)

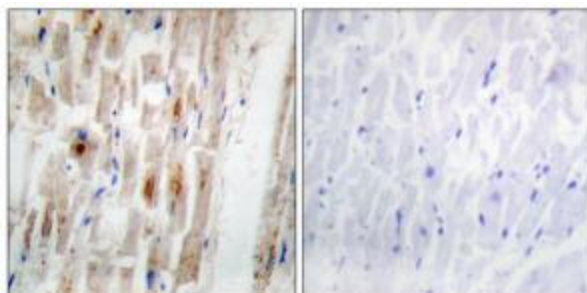
Protein Families: Cancer stem cells, Druggable Genome, ES Cell Differentiation/IPS, Stem cell relevant signaling - JAK/STAT signaling pathway, Stem cell relevant signaling - TGF β /BMP signaling pathway, Transcription Factors

Protein Pathways: TGF-beta signaling pathway

Product images:



Western blot analysis of extracts from HeLa cells treated with Serum (10%, 15min), using Smad1 (phospho-Ser465) antibody. The lane on the right is treated with the synthesized peptide.



Immunohistochemical analysis of paraffin-embedded human heart tissue, using Smad1 (phospho-Ser465) antibody. The picture on the right is treated with the synthesized peptide.