

Product datasheet for **TA312831**

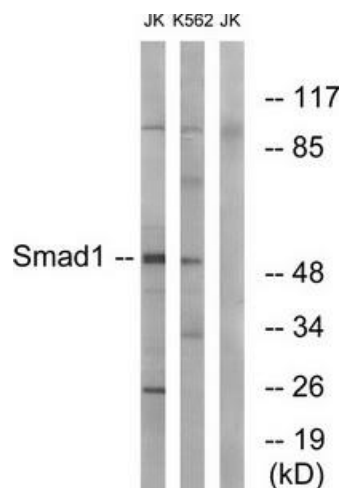
SMAD1 Rabbit Polyclonal Antibody

Product data:

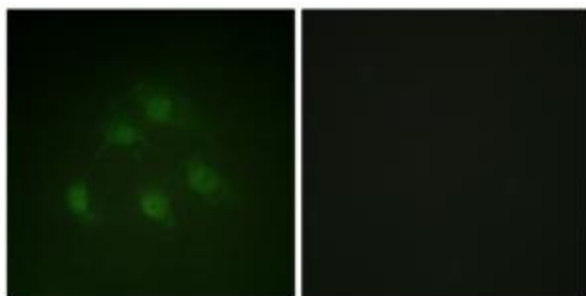
Product Type:	Primary Antibodies
Applications:	IF, WB
Recommended Dilution:	WB: 1:500~1:3000, IF: 1:100~1:500, ELISA: 1:1000
Reactivity:	Human, Mouse
Host:	Rabbit
Isotype:	IgG
Clonality:	Polyclonal
Immunogen:	The antiserum was produced against synthesized non-phosphopeptide derived from human Smad1 around the phosphorylation site of serine 187 (P-H-SP-P-N).
Formulation:	Phosphate buffered saline (without Mg ²⁺ and Ca ²⁺), pH 7.4, 150mM NaCl, 0.02% sodium azide and 50% glycerol.
Concentration:	lot specific
Purification:	The antibody was affinity-purified from rabbit antiserum by affinity-chromatography using epitope-specific immunogen.
Conjugation:	Unconjugated
Storage:	Store at -20°C as received.
Stability:	Stable for 12 months from date of receipt.
Gene Name:	SMAD family member 1
Database Link:	NP_005891 Entrez Gene 17125 Mouse Entrez Gene 4086 Human Q15797
Synonyms:	BSP-1; BSP1; JV4-1; JV41; MADH1; MADR1
Note:	Smad1 (Ab-187) antibody detects endogenous levels of total Smad1 protein
Protein Families:	Cancer stem cells, Druggable Genome, ES Cell Differentiation/IPS, Stem cell relevant signaling - JAK/STAT signaling pathway, Stem cell relevant signaling - TGFb/BMP signaling pathway, Transcription Factors
Protein Pathways:	TGF-beta signaling pathway



[View online »](#)

Product images:

Western blot analysis of extracts from 293 cells, using Smad1 (Ab-187) antibody. The lane on the right is treated with the synthesized peptide.



Immunofluorescence analysis of HeLa cells, using Smad1 (Ab-187) antibody. The picture on the right is treated with the synthesized peptide.