

Product datasheet for **TA312827**

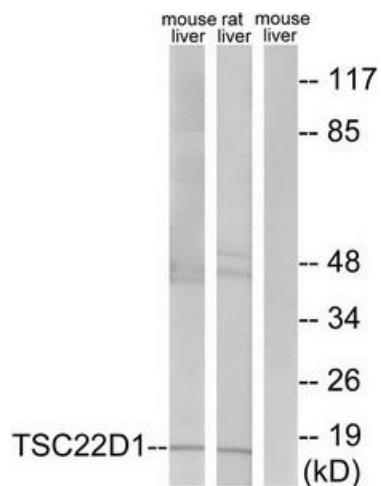
TSC22D1 Rabbit Polyclonal Antibody

Product data:

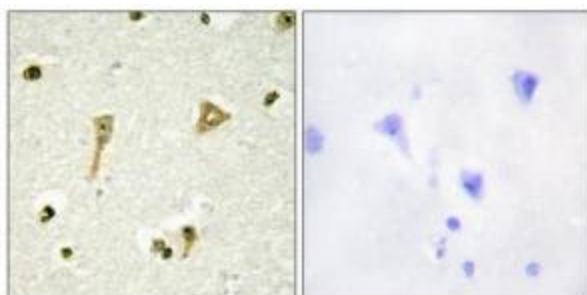
Product Type:	Primary Antibodies
Applications:	IF, IHC, WB
Recommended Dilution:	WB: 1:500~1:3000, IHC: 1:50~1:100, IF: 1:100~1:500, ELISA: 1:20000
Reactivity:	Human, Mouse, Rat
Host:	Rabbit
Isotype:	IgG
Clonality:	Polyclonal
Immunogen:	The antiserum was produced against synthesized peptide derived from internal of human TSC22D1.
Formulation:	Phosphate buffered saline (without Mg ²⁺ and Ca ²⁺), pH 7.4, 150mM NaCl, 0.02% sodium azide and 50% glycerol.
Concentration:	lot specific
Purification:	The antibody was affinity-purified from rabbit antiserum by affinity-chromatography using epitope-specific immunogen.
Conjugation:	Unconjugated
Storage:	Store at -20°C as received.
Stability:	Stable for 12 months from date of receipt.
Gene Name:	TSC22 domain family member 1
Database Link:	NP_006013 Entrez Gene 21807 Mouse Entrez Gene 498545 Rat Entrez Gene 8848 Human Q15714
Synonyms:	Ptg-2; TGFB114; TSC22
Note:	TSC22D1 antibody detects endogenous levels of total TSC22D1 protein.
Protein Families:	Transcription Factors



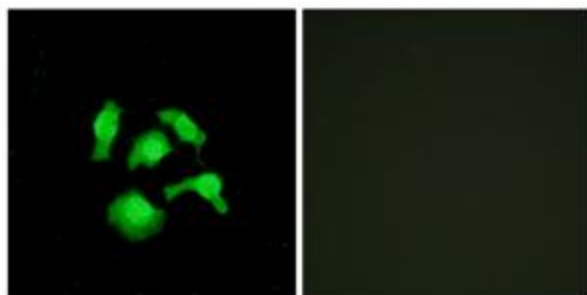
[View online »](#)

Product images:

Western blot analysis of extracts from mouse liver cells and rat liver cells, using TSC22D1 antibody. The lane on the right is treated with the synthesized peptide.



Immunohistochemistry analysis of paraffin-embedded human brain tissue using TSC22D1 antibody. The picture on the right is treated with the synthesized peptide.



Immunofluorescence analysis of HepG2 cells, using TSC22D1 antibody. The picture on the right is treated with the synthesized peptide.