

Product datasheet for **TA312826**

beta III Tubulin (TUBB3) Rabbit Polyclonal Antibody

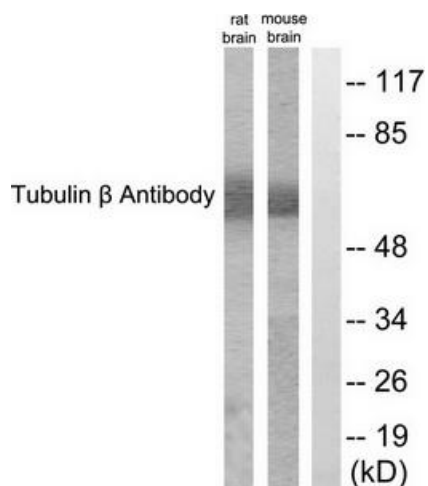
Product data:

Product Type:	Primary Antibodies
Applications:	IHC, WB
Recommended Dilution:	WB: 1:500~1:3000, IHC: 1:50~1:100, ELISA: 1:5000
Reactivity:	Human, Mouse, Rat
Host:	Rabbit
Isotype:	IgG
Clonality:	Polyclonal
Immunogen:	The antiserum was produced against synthesized peptide derived from C-terminal of human Tubulin β .
Formulation:	Phosphate buffered saline (without Mg ²⁺ and Ca ²⁺), pH 7.4, 150mM NaCl, 0.02% sodium azide and 50% glycerol.
Concentration:	lot specific
Purification:	The antibody was affinity-purified from rabbit antiserum by affinity-chromatography using epitope-specific immunogen.
Conjugation:	Unconjugated
Storage:	Store at -20°C as received.
Stability:	Stable for 12 months from date of receipt.
Gene Name:	tubulin beta 3 class III
Database Link:	NP_006077 Entrez Gene 22152 MouseEntrez Gene 246118 RatEntrez Gene 10381 Human Q13509
Synonyms:	beta-4; CDCBM; CDCBM1; CFEOM3; CFEOM3A; FEOM3; TUBB4
Note:	Tubulin . antibody detects endogenous levels of total Tubulin . protein.
Protein Families:	Druggable Genome, ES Cell Differentiation/IPS
Protein Pathways:	Gap junction, Pathogenic Escherichia coli infection

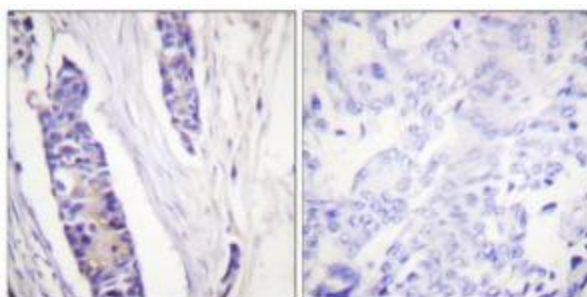


[View online »](#)

Product images:



Western blot analysis of extracts from rat cells and mouse brain cells, using Tubulin β antibody. The lane on the right is treated with the synthesized peptide.



Immunohistochemistry analysis of paraffin-embedded human breast carcinoma tissue, using Tubulin β antibody. The picture on the right is treated with the synthesized peptide.