

## Product datasheet for **TA312825**

### **Nrf2 (NFE2L2) Rabbit Polyclonal Antibody**

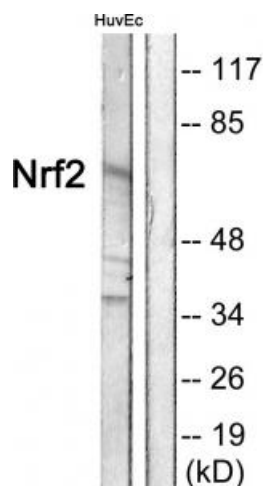
#### **Product data:**

<b>Product Type:</b>	Primary Antibodies
<b>Applications:</b>	IF, IHC, WB
<b>Recommended Dilution:</b>	WB: 1:500~1:3000, IHC: 1:50~1:100, IF: 1:100~1:500, ELISA: 1:5000
<b>Reactivity:</b>	Human, Mouse, Rat
<b>Host:</b>	Rabbit
<b>Isotype:</b>	IgG
<b>Clonality:</b>	Polyclonal
<b>Immunogen:</b>	The antiserum was produced against synthesized peptide derived from human NRF2.
<b>Formulation:</b>	Phosphate buffered saline (without Mg <sup>2+</sup> and Ca <sup>2+</sup> ), pH 7.4, 150mM NaCl, 0.02% sodium azide and 50% glycerol.
<b>Concentration:</b>	lot specific
<b>Purification:</b>	The antibody was affinity-purified from rabbit antiserum by affinity-chromatography using epitope-specific immunogen.
<b>Conjugation:</b>	Unconjugated
<b>Storage:</b>	Store at -20°C as received.
<b>Stability:</b>	Stable for 12 months from date of receipt.
<b>Gene Name:</b>	nuclear factor, erythroid 2 like 2
<b>Database Link:</b>	<a href="#">NP_006155</a> <a href="#">Entrez Gene 18024 Mouse</a> <a href="#">Entrez Gene 83619 Rat</a> <a href="#">Entrez Gene 4780 Human</a> <a href="#">Q16236</a>
<b>Synonyms:</b>	NRF2
<b>Note:</b>	NRF2 antibody detects endogenous levels of total NRF2 protein.
<b>Protein Families:</b>	Transcription Factors

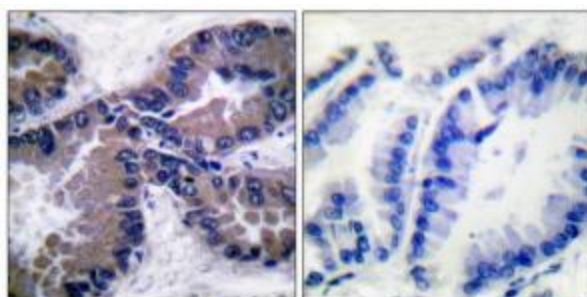


[View online »](#)

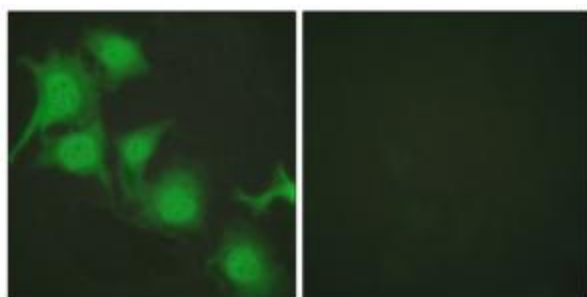
## Product images:



Western blot analysis of extracts from HuvEc cells, using NRF2 antibody (#TA312825). The lane on the right is treated with the synthesized peptide.



Immunohistochemical analysis of paraffin-embedded human lung carcinoma tissue using NRF2 antibody (#TA312825). The picture on the right is treated with the synthesized peptide.



Immunofluorescence analysis of HuvEc cells, using NRF2 antibody (#TA312825). The picture on the right is treated with the synthesized peptide.