

Product datasheet for **TA312819**

BRN3A (POU4F1) Rabbit Polyclonal Antibody

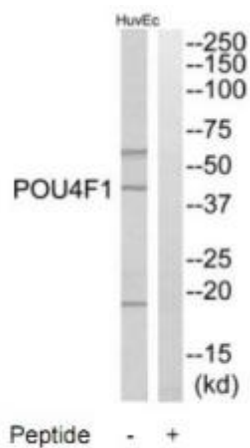
Product data:

Product Type:	Primary Antibodies
Applications:	WB
Recommended Dilution:	WB: 1:500~1:3000, ELISA: 1:10000
Reactivity:	Human, Mouse, Rat
Host:	Rabbit
Isotype:	IgG
Clonality:	Polyclonal
Immunogen:	The antiserum was produced against synthesized peptide derived from internal of human POU4F1.
Formulation:	Phosphate buffered saline (without Mg ²⁺ and Ca ²⁺), pH 7.4, 150mM NaCl, 0.02% sodium azide and 50% glycerol.
Concentration:	lot specific
Purification:	The antibody was affinity-purified from rabbit antiserum by affinity-chromatography using epitope-specific immunogen.
Conjugation:	Unconjugated
Storage:	Store at -20°C as received.
Stability:	Stable for 12 months from date of receipt.
Gene Name:	POU class 4 homeobox 1
Database Link:	NP_006228 Entrez Gene 18996 MouseEntrez Gene 114503 RatEntrez Gene 5457 Human Q01851
Synonyms:	brn-3A; BRN3A; Oct-T1; RDC-1
Note:	POU4F1 antibody detects endogenous levels of total POU4F1 protein.
Protein Families:	Transcription Factors



[View online »](#)

Product images:



Western blot analysis of extracts from HuvEc cells, using POU4F1 antibody. The lane on the right is treated with the synthesized peptide.