

Product datasheet for **TA312813**

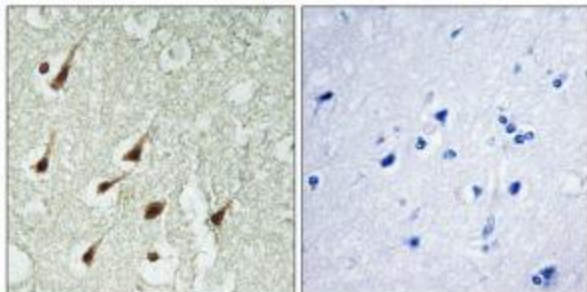
PKC theta (PRKCQ) Rabbit Polyclonal Antibody

Product data:

| | |
|-----------------------|--|
| Product Type: | Primary Antibodies |
| Applications: | IHC |
| Recommended Dilution: | IHC: 1:50~1:100, ELISA: 1:5000 |
| Reactivity: | Human |
| Host: | Rabbit |
| Isotype: | IgG |
| Clonality: | Polyclonal |
| Immunogen: | The antiserum was produced against synthesized peptide derived from Internal of human PKC ?. |
| Formulation: | Phosphate buffered saline (without Mg ²⁺ and Ca ²⁺), pH 7.4, 150mM NaCl, 0.02% sodium azide and 50% glycerol. |
| Concentration: | lot specific |
| Purification: | The antibody was affinity-purified from rabbit antiserum by affinity-chromatography using epitope-specific immunogen. |
| Conjugation: | Unconjugated |
| Storage: | Store at -20°C as received. |
| Stability: | Stable for 12 months from date of receipt. |
| Gene Name: | protein kinase C theta |
| Database Link: | NP_006248 Entrez Gene 5588 Human Q04759 |
| Synonyms: | nPKC-theta; PRKCT |
| Note: | PKC . antibody detects endogenous levels of total PKC . protein. |
| Protein Families: | Druggable Genome, Protein Kinase, Transcription Factors |
| Protein Pathways: | Adipocytokine signaling pathway, T cell receptor signaling pathway, Tight junction, Vascular smooth muscle contraction |



[View online »](#)

Product images:

Immunohistochemistry analysis of paraffin-embedded human brain tissue using PKC θ antibody. The picture on the right is treated with the synthesized peptide.