

Product datasheet for **TA312809**

TNFAIP3 Rabbit Polyclonal Antibody

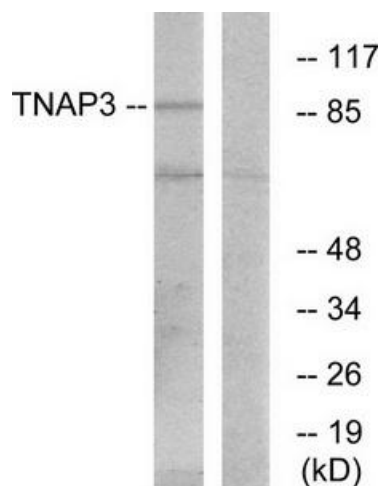
Product data:

Product Type:	Primary Antibodies
Applications:	IF, WB
Recommended Dilution:	WB: 1:500~1:3000, IF: 1:100~1:500, ELISA: 1:20000
Reactivity:	Human, Mouse
Host:	Rabbit
Isotype:	IgG
Clonality:	Polyclonal
Immunogen:	The antiserum was produced against synthesized peptide derived from internal of human TNAP3.
Formulation:	Phosphate buffered saline (without Mg ²⁺ and Ca ²⁺), pH 7.4, 150mM NaCl, 0.02% sodium azide and 50% glycerol.
Concentration:	lot specific
Purification:	The antibody was affinity-purified from rabbit antiserum by affinity-chromatography using epitope-specific immunogen.
Conjugation:	Unconjugated
Storage:	Store at -20°C as received.
Stability:	Stable for 12 months from date of receipt.
Gene Name:	TNF alpha induced protein 3
Database Link:	NP_006281 Entrez Gene 21929 Mouse Entrez Gene 7128 Human P21580
Synonyms:	A20; OTUD7C; TNFA1P2
Note:	TNAP3 antibody detects endogenous levels of total TNAP3 protein.
Protein Families:	Druggable Genome
Protein Pathways:	NOD-like receptor signaling pathway

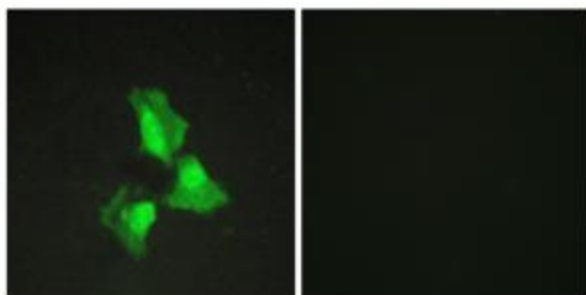


[View online »](#)

Product images:



Western blot analysis of extracts from RAW264.7 cells, using TNAP3 antibody. The lane on the right is treated with the synthesized peptide.



Immunofluorescence analysis of HepG2 cells, using TNAP3 antibody. The picture on the right is treated with the synthesized peptide.