

Product datasheet for **TA312807**

MERTK Rabbit Polyclonal Antibody

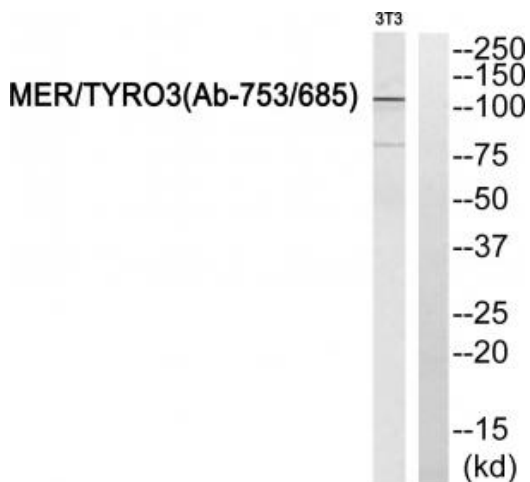
Product data:

| | |
|-----------------------|--|
| Product Type: | Primary Antibodies |
| Applications: | WB |
| Recommended Dilution: | WB: 1:500~1:3000, ELISA: 1:10000 |
| Reactivity: | Human, Mouse, Rat |
| Host: | Rabbit |
| Isotype: | IgG |
| Clonality: | Polyclonal |
| Immunogen: | The antiserum was produced against synthesized peptide derived from Internal of human MERTK. |
| Formulation: | Phosphate buffered saline (without Mg ²⁺ and Ca ²⁺), pH 7.4, 150mM NaCl, 0.02% sodium azide and 50% glycerol. |
| Concentration: | lot specific |
| Purification: | The antibody was affinity-purified from rabbit antiserum by affinity-chromatography using epitope-specific immunogen. |
| Conjugation: | Unconjugated |
| Storage: | Store at -20°C as received. |
| Stability: | Stable for 12 months from date of receipt. |
| Gene Name: | MER proto-oncogene, tyrosine kinase |
| Database Link: | NP_006334 Entrez Gene 17289 Mouse Entrez Gene 65037 Rat Entrez Gene 10461 Human Q12866 |
| Synonyms: | c-mer; MER; RP38 |
| Note: | MER/TYRO3 (Ab-753/685) antibody detects endogenous levels of total MERTK protein. |
| Protein Families: | Druggable Genome, Protein Kinase, Transmembrane |

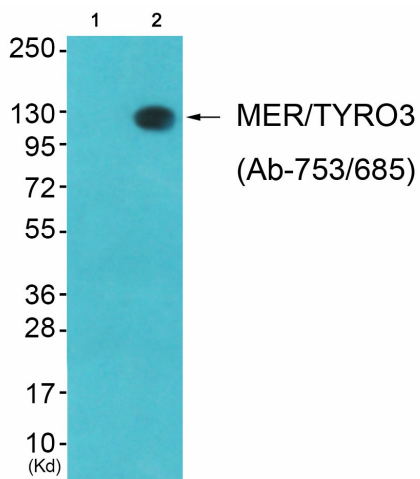


[View online »](#)

Product images:



Western blot analysis of extracts from NIH-3T3 cells, using MER/TYRO3 (Ab-753/685)antibody.The lane on the right is treated with the synthesized peptide.



Western blot analysis of extracts from 3T3 cells (Lane 2), using MER/TYRO3 (Ab-753/685) Antibody. The lane on the left is treated with synthesized peptide.