

## Product datasheet for **TA312803**

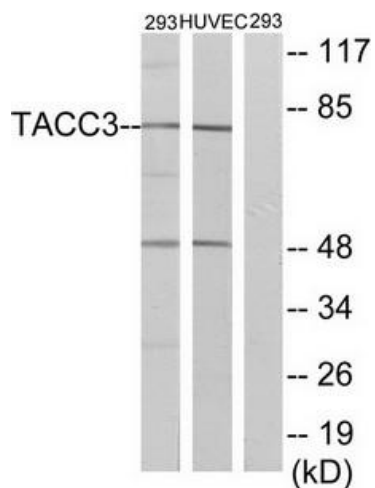
### TACC3 Rabbit Polyclonal Antibody

#### Product data:

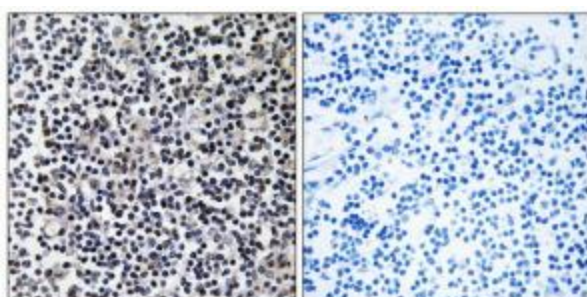
Product Type:	Primary Antibodies
Applications:	IF, IHC, WB
Recommended Dilution:	WB: 1:500~1:3000, IHC: 1:50~1:100, IF: 1:100~1:500, ELISA: 1:1000
Reactivity:	Human, Mouse
Host:	Rabbit
Isotype:	IgG
Clonality:	Polyclonal
Immunogen:	The antiserum was produced against synthesized peptide derived from C-terminal of human TACC3.
Formulation:	Phosphate buffered saline (without Mg <sup>2+</sup> and Ca <sup>2+</sup> ), pH 7.4, 150mM NaCl, 0.02% sodium azide and 50% glycerol.
Concentration:	lot specific
Purification:	The antibody was affinity-purified from rabbit antiserum by affinity-chromatography using epitope-specific immunogen.
Conjugation:	Unconjugated
Storage:	Store at -20°C as received.
Stability:	Stable for 12 months from date of receipt.
Gene Name:	transforming acidic coiled-coil containing protein 3
Database Link:	<a href="#">NP_006333</a> <a href="#">Entrez Gene 21335 Mouse</a> <a href="#">Entrez Gene 10460 Human</a> <a href="#">Q9Y6A5</a>
Synonyms:	ERIC-1; ERIC1
Note:	TACC3 antibody detects endogenous levels of total TACC3 protein.



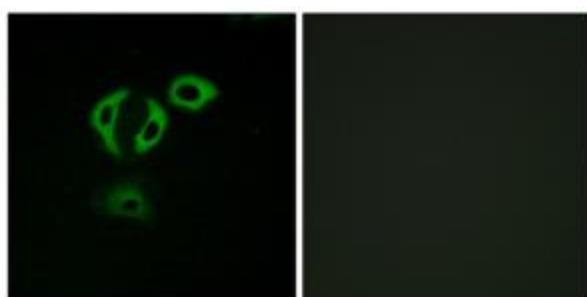
[View online »](#)

**Product images:**


Western blot analysis of extracts from 293 cells and HUVEC cells, using TACC3 antibody. The lane on the right is treated with the synthesized peptide.



Immunohistochemistry analysis of paraffin-embedded human lung carcinoma tissue using TACC3 antibody. The picture on the right is treated with the synthesized peptide.



Immunofluorescence analysis of A549 cells, using TACC3 antibody. The picture on the right is treated with the synthesized peptide.