

Product datasheet for **TA312801**

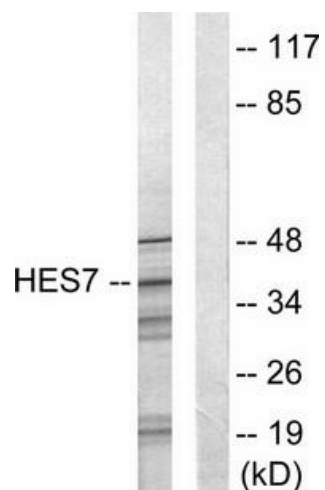
HEXIM1 Rabbit Polyclonal Antibody

Product data:

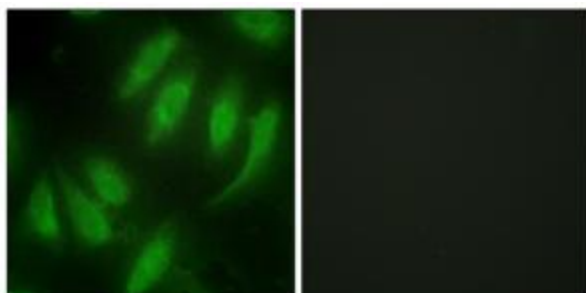
Product Type:	Primary Antibodies
Applications:	IF, WB
Recommended Dilution:	WB: 1:500~1:3000, IF: 1:100~1:500, ELISA: 1:10000
Reactivity:	Human, Mouse, Rat
Host:	Rabbit
Isotype:	IgG
Clonality:	Polyclonal
Immunogen:	The antiserum was produced against synthesized peptide derived from Internal of human HES7.
Formulation:	Phosphate buffered saline (without Mg ²⁺ and Ca ²⁺), pH 7.4, 150mM NaCl, 0.02% sodium azide and 50% glycerol.
Concentration:	lot specific
Purification:	The antibody was affinity-purified from rabbit antiserum by affinity-chromatography using epitope-specific immunogen.
Conjugation:	Unconjugated
Storage:	Store at -20°C as received.
Stability:	Stable for 12 months from date of receipt.
Gene Name:	hexamethylene bis-acetamide inducible 1
Database Link:	NP_006451 Entrez Gene 192231 Mouse Entrez Gene 498008 Rat Entrez Gene 10614 Human O94992
Synonyms:	CLP1; EDG1; HIS1; MAQ1
Note:	HES7 antibody detects endogenous levels of total HES7 protein.
Protein Families:	Transcription Factors



[View online »](#)

Product images:

Western blot analysis of extracts from NIH-3T3 cells, using HES7 antibody. The lane on the right is treated with the synthesized peptide.



Immunofluorescence analysis of HeLa cells, using HES7 antibody. The picture on the right is treated with the synthesized peptide.