

## Product datasheet for **TA312792**

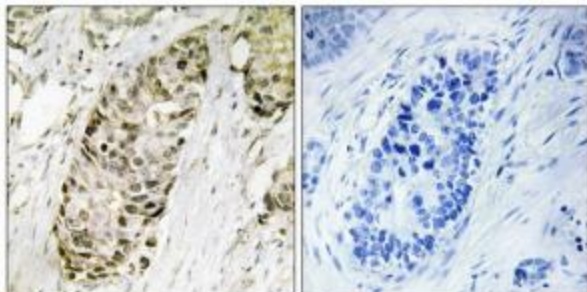
### **GADD45G Rabbit Polyclonal Antibody**

#### **Product data:**

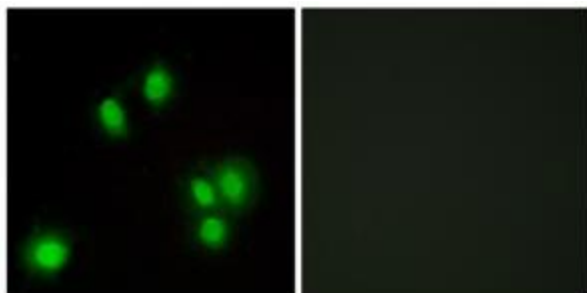
<b>Product Type:</b>	Primary Antibodies
<b>Applications:</b>	IF, IHC
<b>Recommended Dilution:</b>	IHC: 1:50~1:100, IF: 1:100~1:500, ELISA: 1:1000
<b>Reactivity:</b>	Human, Mouse, Rat
<b>Host:</b>	Rabbit
<b>Isotype:</b>	IgG
<b>Clonality:</b>	Polyclonal
<b>Immunogen:</b>	The antiserum was produced against synthesized peptide derived from internal of human GA45G.
<b>Formulation:</b>	Phosphate buffered saline (without Mg <sup>2+</sup> and Ca <sup>2+</sup> ), pH 7.4, 150mM NaCl, 0.02% sodium azide and 50% glycerol.
<b>Concentration:</b>	lot specific
<b>Purification:</b>	The antibody was affinity-purified from rabbit antiserum by affinity-chromatography using epitope-specific immunogen.
<b>Conjugation:</b>	Unconjugated
<b>Storage:</b>	Store at -20°C as received.
<b>Stability:</b>	Stable for 12 months from date of receipt.
<b>Gene Name:</b>	growth arrest and DNA damage inducible gamma
<b>Database Link:</b>	<a href="#">NP_006696</a> <a href="#">Entrez Gene 23882 MouseEntrez Gene 291005 RatEntrez Gene 10912 Human O95257</a>
<b>Synonyms:</b>	CR6; DDIT2; GADD45gamma; GRP17
<b>Note:</b>	GA45G antibody detects endogenous levels of total GA45G protein.
<b>Protein Pathways:</b>	Cell cycle, MAPK signaling pathway, p53 signaling pathway



[View online »](#)

**Product images:**

Immunohistochemistry analysis of paraffin-embedded human lung carcinoma tissue using GA45G antibody. The picture on the right is treated with the synthesized peptide.



Immunofluorescence analysis of A549 cells, using GA45G antibody. The picture on the right is treated with the synthesized peptide.