

Product datasheet for **TA312791**

TUSC3 Rabbit Polyclonal Antibody

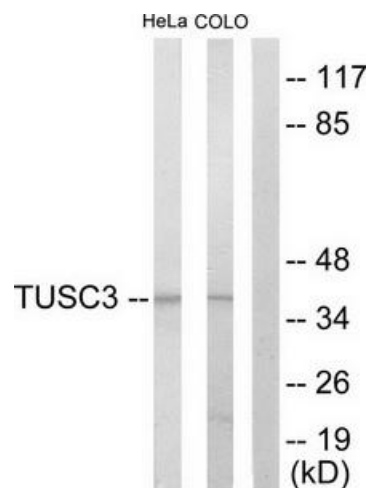
Product data:

Product Type:	Primary Antibodies
Applications:	IF, WB
Recommended Dilution:	WB: 1:500~1:3000, IF: 1:100~1:500, ELISA: 1:10000
Reactivity:	Human, Mouse, Rat
Host:	Rabbit
Isotype:	IgG
Clonality:	Polyclonal
Immunogen:	The antiserum was produced against synthesized peptide derived from internal of human TUSC3.
Formulation:	Phosphate buffered saline (without Mg ²⁺ and Ca ²⁺), pH 7.4, 150mM NaCl, 0.02% sodium azide and 50% glycerol.
Concentration:	lot specific
Purification:	The antibody was affinity-purified from rabbit antiserum by affinity-chromatography using epitope-specific immunogen.
Conjugation:	Unconjugated
Storage:	Store at -20°C as received.
Stability:	Stable for 12 months from date of receipt.
Gene Name:	tumor suppressor candidate 3
Database Link:	NP_006756 Entrez Gene 80286 MouseEntrez Gene 290783 RatEntrez Gene 7991 Human Q13454
Synonyms:	D8S1992; M33; MRT7; MRT22; N33; OST3A
Note:	TUSC3 antibody detects endogenous levels of total TUSC3 protein.
Protein Families:	Druggable Genome, Transmembrane
Protein Pathways:	Metabolic pathways, N-Glycan biosynthesis

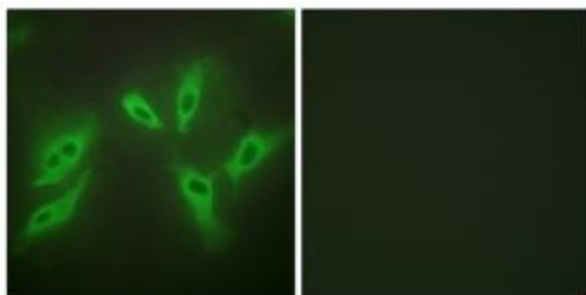


[View online »](#)

Product images:



Western blot analysis of extracts from HeLa cells and COLO205 cells, using TUSC3 antibody. The lane on the right is treated with the synthesized peptide.



Immunofluorescence analysis of HeLa cells, using TUSC3 antibody. The picture on the right is treated with the synthesized peptide.