

Product datasheet for **TA312788**

JAB1 (COPS5) Rabbit Polyclonal Antibody

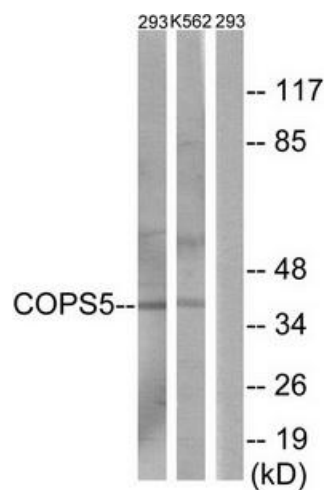
Product data:

Product Type:	Primary Antibodies
Applications:	WB
Recommended Dilution:	WB: 1:500~1:3000, ELISA: 1:1000
Reactivity:	Human, Mouse
Host:	Rabbit
Isotype:	IgG
Clonality:	Polyclonal
Immunogen:	The antiserum was produced against synthesized peptide derived from internal of human COPS5.
Formulation:	Phosphate buffered saline (without Mg ²⁺ and Ca ²⁺), pH 7.4, 150mM NaCl, 0.02% sodium azide and 50% glycerol.
Concentration:	lot specific
Purification:	The antibody was affinity-purified from rabbit antiserum by affinity-chromatography using epitope-specific immunogen.
Conjugation:	Unconjugated
Storage:	Store at -20°C as received.
Stability:	Stable for 12 months from date of receipt.
Gene Name:	COP9 signalosome subunit 5
Database Link:	NP_006828 Entrez Gene 26754 Mouse Entrez Gene 10987 Human Q92905
Synonyms:	CSN5; JAB1; MOV-34; SGN5
Note:	COPS5 antibody detects endogenous levels of total COPS5 protein.
Protein Families:	Druggable Genome, Protease, Transcription Factors



[View online »](#)

Product images:



Western blot analysis of extracts from 293 cells and K562 cells, using COPS5 antibody. The lane on the right is treated with the synthesized peptide.