

Product datasheet for **TA312787**

PRRX1 Rabbit Polyclonal Antibody

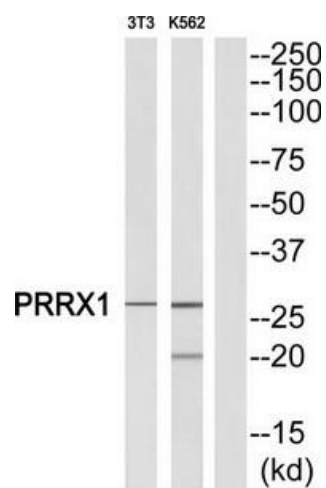
Product data:

Product Type:	Primary Antibodies
Applications:	WB
Recommended Dilution:	WB: 1:500~1:3000, ELISA: 1:10000
Reactivity:	Human, Mouse, Rat
Host:	Rabbit
Isotype:	IgG
Clonality:	Polyclonal
Immunogen:	The antiserum was produced against synthesized peptide derived from Internal of human PRRX1.
Formulation:	Phosphate buffered saline (without Mg ²⁺ and Ca ²⁺), pH 7.4, 150mM NaCl, 0.02% sodium azide and 50% glycerol.
Purification:	The antibody was affinity-purified from rabbit antiserum by affinity-chromatography using epitope-specific immunogen.
Conjugation:	Unconjugated
Storage:	Store at -20°C as received.
Stability:	Stable for 12 months from date of receipt.
Gene Name:	paired related homeobox 1
Database Link:	NP_008833 Entrez Gene 18933 Mouse Entrez Gene 266813 Rat Entrez Gene 5396 Human P54821
Synonyms:	AGOTC; PHOX1; PMX1; PRX-1; PRX1
Note:	PRRX1 antibody detects endogenous levels of total PRRX1 protein.
Protein Families:	Transcription Factors



[View online »](#)

Product images:



Western blot analysis of extracts from NIH-3T3/K562 cells, using PRRX1 antibody. The lane on the right is treated with the synthesized peptide.