

Product datasheet for **TA312785**

Synapsin I (SYN1) Rabbit Polyclonal Antibody

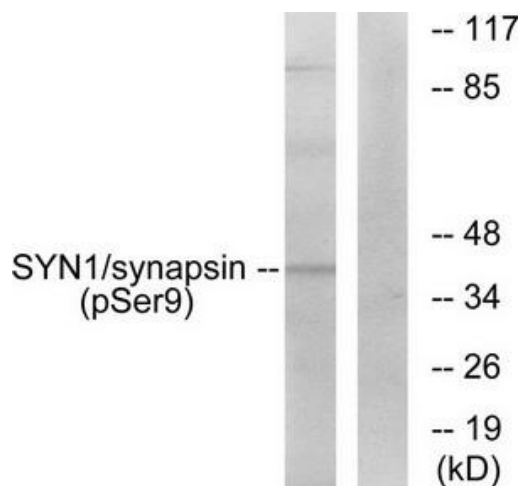
Product data:

Product Type:	Primary Antibodies
Applications:	WB
Recommended Dilution:	WB: 1:500~1:3000, ELISA: 1:20000
Reactivity:	Human, Mouse, Rat
Modifications:	Phospho-specific
Host:	Rabbit
Isotype:	IgG
Clonality:	Polyclonal
Immunogen:	The antiserum was produced against synthesized phosphopeptide derived from human synapsin around the phosphorylation site of serine 9 (R-L-SP-D-S).
Formulation:	Phosphate buffered saline (without Mg ²⁺ and Ca ²⁺), pH 7.4, 150mM NaCl, 0.02% sodium azide and 50% glycerol.
Concentration:	lot specific
Purification:	The antibody was affinity-purified from rabbit antiserum by affinity-chromatography using epitope-specific immunogen.
Conjugation:	Unconjugated
Storage:	Store at -20°C as received.
Stability:	Stable for 12 months from date of receipt.
Gene Name:	synapsin I
Database Link:	NP_008881 Entrez Gene 20964 Mouse Entrez Gene 24949 Rat Entrez Gene 6853 Human P17600
Synonyms:	SYN1a; SYN1b; SYNI
Note:	synapsin (phospho-Ser9) antibody detects endogenous levels of synapsin only when phosphorylated at serine 9. The antibody is expected to recognize phosphorylated serine 9 of all synapsin isoforms.



[View online »](#)

Product images:



Western blot analysis of extracts from 293 cells treated with PMA (200nM, 30mins), using synapsin (phospho-Ser9) antibody. The lane on the right is treated with the synthesized peptide.