

Product datasheet for **TA312777**

CDC37 Rabbit Polyclonal Antibody

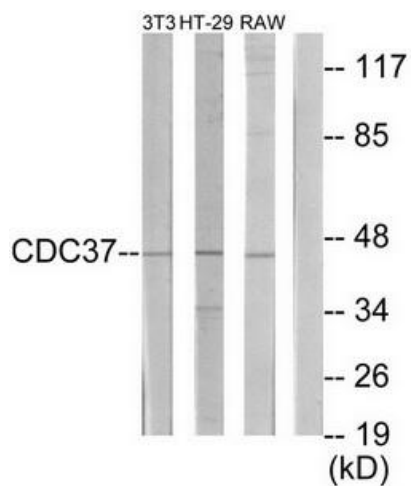
Product data:

Product Type:	Primary Antibodies
Applications:	WB
Recommended Dilution:	WB: 1:500~1:3000, ELISA: 1:20000
Reactivity:	Human, Mouse, Rat
Host:	Rabbit
Isotype:	IgG
Clonality:	Polyclonal
Immunogen:	The antiserum was produced against synthesized peptide derived from internal of human p50 CDC37.
Formulation:	Phosphate buffered saline (without Mg ²⁺ and Ca ²⁺), pH 7.4, 150mM NaCl, 0.02% sodium azide and 50% glycerol.
Concentration:	lot specific
Purification:	The antibody was affinity-purified from rabbit antiserum by affinity-chromatography using epitope-specific immunogen.
Conjugation:	Unconjugated
Storage:	Store at -20°C as received.
Stability:	Stable for 12 months from date of receipt.
Gene Name:	cell division cycle 37
Database Link:	NP_008996 Entrez Gene 12539 MouseEntrez Gene 114562 RatEntrez Gene 11140 Human Q16543
Synonyms:	P50CDC37
Note:	p50 CDC37 antibody detects endogenous levels of total p50 CDC37 protein.



[View online »](#)

Product images:



Western blot analysis of extracts from NIH-3T3 cells, HT-29 cells and RAW264.7 cells, using p50 CDC37 antibody. The lane on the right is treated with the synthesized peptide.