

Product datasheet for **TA312776**

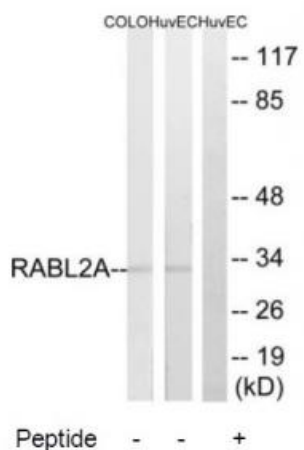
RABL2A Rabbit Polyclonal Antibody

Product data:

Product Type:	Primary Antibodies
Applications:	WB
Recommended Dilution:	WB: 1:500~1:3000, ELISA: 1:20000
Reactivity:	Human
Host:	Rabbit
Isotype:	IgG
Clonality:	Polyclonal
Immunogen:	The antiserum was produced against synthesized peptide derived from internal of human RABL2A.
Formulation:	Phosphate buffered saline (without Mg ²⁺ and Ca ²⁺), pH 7.4, 150mM NaCl, 0.02% sodium azide and 50% glycerol.
Concentration:	lot specific
Purification:	The antibody was affinity-purified from rabbit antiserum by affinity-chromatography using epitope-specific immunogen.
Conjugation:	Unconjugated
Storage:	Store at -20°C as received.
Stability:	Stable for 12 months from date of receipt.
Gene Name:	RAB, member of RAS oncogene family-like 2A
Database Link:	NP_009013 Entrez Gene 11159 Human Q9UBK7
Synonyms:	FLJ78724; MGC117180
Note:	RABL2A antibody detects endogenous levels of total RABL2A protein.
Protein Families:	Druggable Genome



[View online »](#)

Product images:


Western blot analysis of extracts from HuvEc, 293 and COLO205 cells, using RABL2A antibody. The lane on the right is treated with the synthesized peptide.