

Product datasheet for **TA312773**

TESK2 Rabbit Polyclonal Antibody

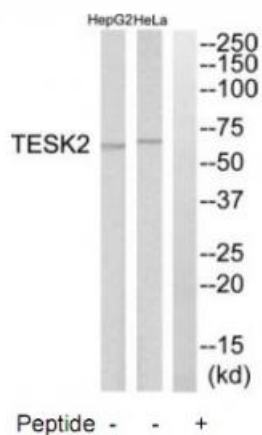
Product data:

Product Type:	Primary Antibodies
Applications:	WB
Recommended Dilution:	WB: 1:500~1:3000, ELISA: 1:20000
Reactivity:	Human, Mouse, Rat
Host:	Rabbit
Isotype:	IgG
Clonality:	Polyclonal
Immunogen:	The antiserum was produced against synthesized peptide derived from internal of human TESK2.
Formulation:	Phosphate buffered saline (without Mg ²⁺ and Ca ²⁺), pH 7.4, 150mM NaCl, 0.02% sodium azide and 50% glycerol.
Concentration:	lot specific
Purification:	The antibody was affinity-purified from rabbit antiserum by affinity-chromatography using epitope-specific immunogen.
Conjugation:	Unconjugated
Storage:	Store at -20°C as received.
Stability:	Stable for 12 months from date of receipt.
Gene Name:	testis-specific kinase 2
Database Link:	NP_009101 Entrez Gene 170908 RatEntrez Gene 230661 MouseEntrez Gene 10420 Human Q96S53
Synonyms:	MGC29168; OTTMUSP00000010191; testis-specific kinase 2
Note:	TESK2 antibody detects endogenous levels of total TESK2 protein.
Protein Families:	Druggable Genome, Protein Kinase



[View online »](#)

Product images:



Western blot analysis of extracts from HepG2 cells and HeLa cells, using TESK2 antibody. The lane on the right is treated with the synthesized peptide.