

Product datasheet for **TA312767**

Chk2 (CHEK2) Rabbit Polyclonal Antibody

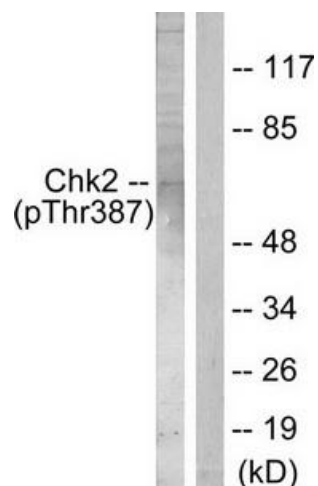
Product data:

Product Type:	Primary Antibodies
Applications:	IHC, WB
Recommended Dilution:	WB: 1:500~1:3000, IHC: 1:50~100, ELISA: 1:5000
Reactivity:	Human, Mouse, Rat
Modifications:	Phospho-specific
Host:	Rabbit
Isotype:	IgG
Clonality:	Polyclonal
Immunogen:	The antiserum was produced against synthesized phosphopeptide derived from human Chk2 around the phosphorylation site of threonine 387 (C-G-TP-P-T).
Formulation:	Phosphate buffered saline (without Mg ²⁺ and Ca ²⁺), pH 7.4, 150mM NaCl, 0.02% sodium azide and 50% glycerol.
Concentration:	lot specific
Purification:	The antibody was affinity-purified from rabbit antiserum by affinity-chromatography using epitope-specific immunogen.
Conjugation:	Unconjugated
Storage:	Store at -20°C as received.
Stability:	Stable for 12 months from date of receipt.
Gene Name:	checkpoint kinase 2
Database Link:	NP_665861 Entrez Gene 50883 Mouse Entrez Gene 114212 Rat Entrez Gene 11200 Human O96017
Synonyms:	CDS1; CHK2; hCds1; HuCds1; LFS2; PP1425; RAD53
Note:	Chk2 (Phospho-Thr387) antibody detects endogenous levels of Chk2 only when phosphorylated at threonine 387
Protein Families:	Druggable Genome, Protein Kinase, Stem cell - Pluripotency
Protein Pathways:	Cell cycle, p53 signaling pathway

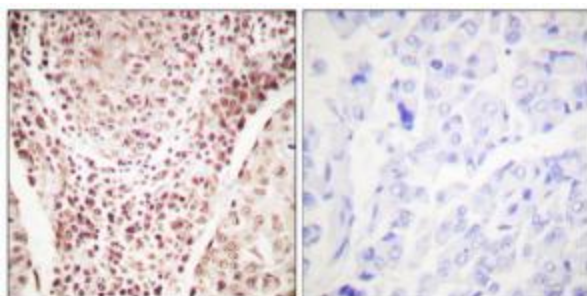


[View online »](#)

Product images:



Western blot analysis of extracts from Jurkat cells, using Chk2 (Phospho-Thr387) Antibody (#TA312767). The lane on the right is treated with the synthesized peptide.



Immunohistochemical analysis of paraffin-embedded human breast carcinoma tissue using Chk2 (Phospho-Thr387) Antibody (#TA312767). The picture on the right is treated with the synthesized peptide.