

## Product datasheet for **TA312764**

### Thymidine Kinase 1 (TK1) Rabbit Polyclonal Antibody

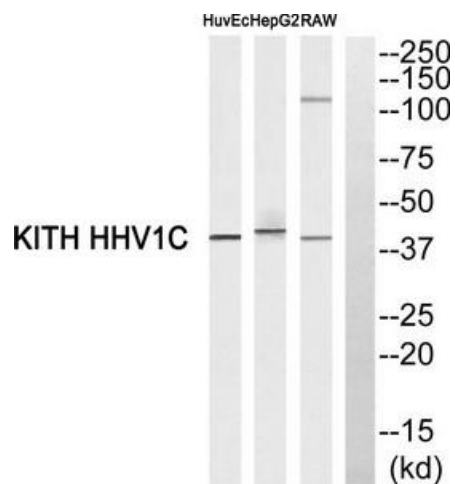
#### Product data:

Product Type:	Primary Antibodies
Applications:	WB
Recommended Dilution:	WB: 1:500~1:3000, ELISA: 1:10000
Reactivity:	Human
Host:	Rabbit
Isotype:	IgG
Clonality:	Polyclonal
Immunogen:	The antiserum was produced against synthesized peptide derived from N-terminal of human TK.
Formulation:	Phosphate buffered saline (without Mg <sup>2+</sup> and Ca <sup>2+</sup> ), pH 7.4, 150mM NaCl, 0.02% sodium azide and 50% glycerol.
Concentration:	lot specific
Purification:	The antibody was affinity-purified from rabbit antiserum by affinity-chromatography using epitope-specific immunogen.
Conjugation:	Unconjugated
Storage:	Store at -20°C as received.
Stability:	Stable for 12 months from date of receipt.
Gene Name:	thymidine kinase 1
Database Link:	<a href="#">NP_003249</a> <a href="#">Entrez Gene 7083 Human</a> <a href="#">P04183</a>
Synonyms:	TK2
Note:	KITH_HHV1C Antibody detects endogenous levels of total TK protein.
Protein Families:	Druggable Genome, Stem cell - Pluripotency
Protein Pathways:	Drug metabolism - other enzymes, Metabolic pathways, Pyrimidine metabolism



[View online »](#)

## Product images:



Western blot analysis of extracts from HuvEc cells, HepG2 cells and RAW264.7 cells, using KITH\_HHV1C Antibody. The lane on the right is treated with the synthesized peptide.