

Product datasheet for **TA312762**

HP1 gamma (CBX3) Rabbit Polyclonal Antibody

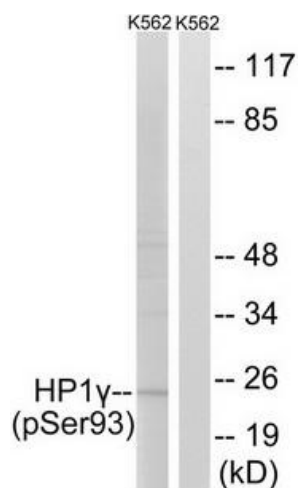
Product data:

Product Type:	Primary Antibodies
Applications:	WB
Recommended Dilution:	WB: 1:500~1:3000, ELISA: 1:10000
Reactivity:	Human, Mouse, Rat
Modifications:	Phospho-specific
Host:	Rabbit
Isotype:	IgG
Clonality:	Polyclonal
Immunogen:	The antiserum was produced against synthesized phosphopeptide derived from human HP1? around the phosphorylation site of serine 93 (R-K-SP-L-S).
Formulation:	Phosphate buffered saline (without Mg ²⁺ and Ca ²⁺), pH 7.4, 150mM NaCl, 0.02% sodium azide and 50% glycerol.
Concentration:	lot specific
Purification:	The antibody was affinity-purified from rabbit antiserum by affinity-chromatography using epitope-specific immunogen.
Conjugation:	Unconjugated
Storage:	Store at -20°C as received.
Stability:	Stable for 12 months from date of receipt.
Gene Name:	chromobox 3
Database Link:	NP_009207 Entrez Gene 12417 Mouse Entrez Gene 297093 Rat Entrez Gene 11335 Human Q13185
Synonyms:	HECH; HP1-GAMMA; HP1Hs-gamma
Note:	HP1. (Phospho-Ser93) antibody detects endogenous levels of HP1. only when phosphorylated at serine 93.
Protein Families:	Druggable Genome, Transcription Factors



[View online »](#)

Product images:



Western blot analysis of extracts from K562 cells, treated with forskolin (40nM, 30mins), using HP1 γ (Phospho-Ser93) antibody. The lane on the right is treated with the synthesized peptide.