

Product datasheet for **TA312758**

c Abl (ABL1) Rabbit Polyclonal Antibody

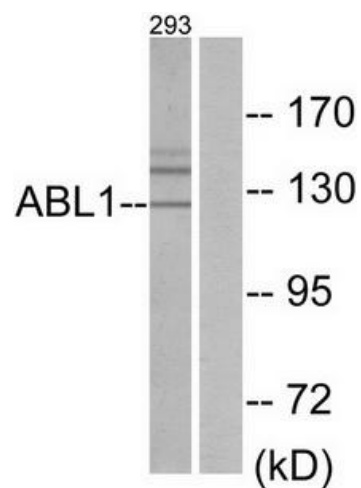
Product data:

Product Type:	Primary Antibodies
Applications:	IHC, WB
Recommended Dilution:	WB: 1:500~1:3000, IHC: 1:50~1:100, ELISA: 1:20000
Reactivity:	Human, Mouse, Rat
Host:	Rabbit
Isotype:	IgG
Clonality:	Polyclonal
Immunogen:	The antiserum was produced against synthesized peptide derived from internal of human ABL1.
Formulation:	Phosphate buffered saline (without Mg ²⁺ and Ca ²⁺), pH 7.4, 150mM NaCl, 0.02% sodium azide and 50% glycerol.
Concentration:	lot specific
Purification:	The antibody was affinity-purified from rabbit antiserum by affinity-chromatography using epitope-specific immunogen.
Conjugation:	Unconjugated
Storage:	Store at -20°C as received.
Stability:	Stable for 12 months from date of receipt.
Gene Name:	ABL proto-oncogene 1, non-receptor tyrosine kinase
Database Link:	NP_009297 Entrez Gene 11350 MouseEntrez Gene 311860 RatEntrez Gene 25 Human P00519
Synonyms:	ABL; abl; bcr; c-ABL; c-ABL1; JTK7; p150; v-abl
Note:	ABL1 antibody detects endogenous levels of total ABL1 protein.
Protein Families:	Druggable Genome, Protein Kinase, Transcription Factors
Protein Pathways:	Axon guidance, Cell cycle, Chronic myeloid leukemia, ErbB signaling pathway, Neurotrophin signaling pathway, Pathogenic Escherichia coli infection, Pathways in cancer, Viral myocarditis

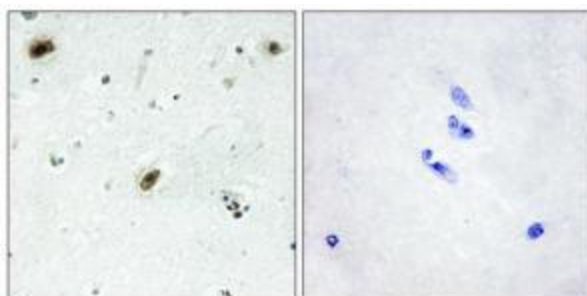


[View online »](#)

Product images:



Western blot analysis of extracts from 293 cells, using ABL1 antibody. The lane on the right is treated with the synthesized peptide.



Immunohistochemistry analysis of paraffin-embedded human brain tissue using ABL1 antibody. The picture on the right is treated with the synthesized peptide.