

Product datasheet for **TA312753**

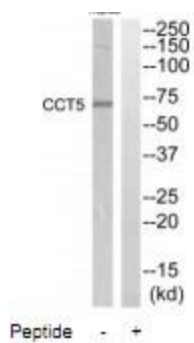
TCP1 epsilon (CCT5) Rabbit Polyclonal Antibody

Product data:

Product Type:	Primary Antibodies
Applications:	WB
Recommended Dilution:	WB: 1:500~1:3000, ELISA: 1:40000
Reactivity:	Mouse, Human, Rat
Host:	Rabbit
Isotype:	IgG
Clonality:	Polyclonal
Immunogen:	The antiserum was produced against synthesized peptide derived from internal of human CCT5.
Formulation:	Phosphate buffered saline (without Mg ²⁺ and Ca ²⁺), pH 7.4, 150mM NaCl, 0.02% sodium azide and 50% glycerol.
Concentration:	lot specific
Purification:	The antibody was affinity-purified from rabbit antiserum by affinity-chromatography using epitope-specific immunogen.
Conjugation:	Unconjugated
Storage:	Store at -20°C as received.
Stability:	Stable for 12 months from date of receipt.
Gene Name:	chaperonin containing TCP1 subunit 5
Database Link:	NP_036205 Entrez Gene 12465 MouseEntrez Gene 294864 RatEntrez Gene 22948 Human P48643
Synonyms:	CCT-epsilon; CCTE; HEL-S-69; PNAS-102; TCP-1-epsilon
Note:	CCT5 antibody detects endogenous levels of total CCT5 protein.
Protein Families:	Druggable Genome



[View online »](#)

Product images:

Western blot analysis of extracts from HepG2 cells, using CCT5 antibody. The lane on the right is treated with the synthesized peptide.