

Product datasheet for **TA312751**

ARL2BP Rabbit Polyclonal Antibody

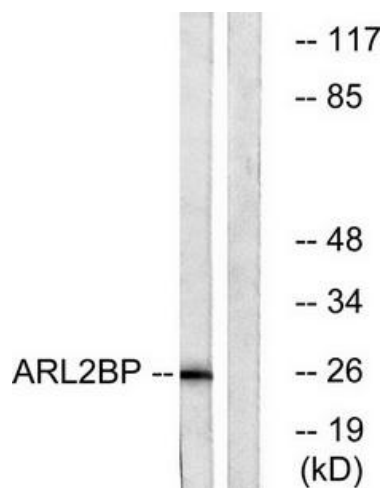
Product data:

Product Type:	Primary Antibodies
Applications:	WB
Recommended Dilution:	WB: 1:500~1:3000, ELISA: 1:20000
Reactivity:	Human, Mouse, Rat
Host:	Rabbit
Isotype:	IgG
Clonality:	Polyclonal
Immunogen:	The antiserum was produced against synthesized peptide derived from internal of human ARL2BP.
Formulation:	Phosphate buffered saline (without Mg ²⁺ and Ca ²⁺), pH 7.4, 150mM NaCl, 0.02% sodium azide and 50% glycerol.
Concentration:	lot specific
Purification:	The antibody was affinity-purified from rabbit antiserum by affinity-chromatography using epitope-specific immunogen.
Conjugation:	Unconjugated
Storage:	Store at -20°C as received.
Stability:	Stable for 12 months from date of receipt.
Gene Name:	ADP ribosylation factor like GTPase 2 binding protein
Database Link:	NP_036238 Entrez Gene 107566 MouseEntrez Gene 498910 RatEntrez Gene 23568 Human Q9Y2Y0
Synonyms:	BART; BART1; RP66
Note:	ARL2BP antibody detects endogenous levels of total ARL2BP protein



[View online »](#)

Product images:



Western blot analysis of extracts from A549 cells, using ARL2BP antibody. The lane on the right is treated with the synthesized peptide.