

Product datasheet for **TA312749**

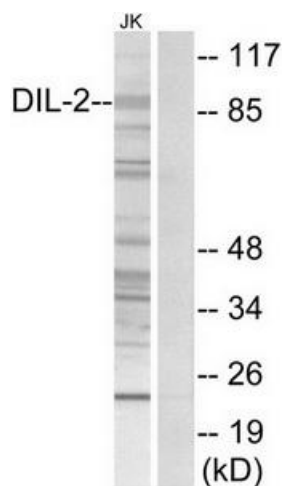
TPX2 Rabbit Polyclonal Antibody

Product data:

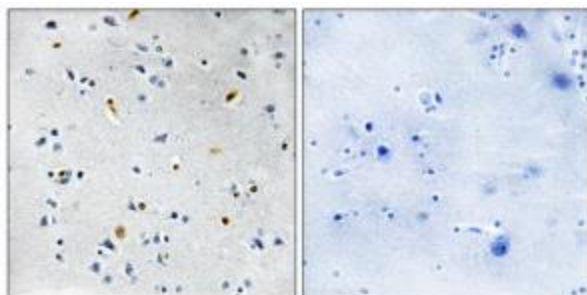
Product Type:	Primary Antibodies
Applications:	IHC, WB
Recommended Dilution:	WB: 1:500~1:3000, IHC: 1:50~1:100, ELISA: 1:1000
Reactivity:	Human, Mouse
Host:	Rabbit
Isotype:	IgG
Clonality:	Polyclonal
Immunogen:	The antiserum was produced against synthesized peptide derived from internal of human DIL-2.
Formulation:	Phosphate buffered saline (without Mg ²⁺ and Ca ²⁺), pH 7.4, 150mM NaCl, 0.02% sodium azide and 50% glycerol.
Concentration:	lot specific
Purification:	The antibody was affinity-purified from rabbit antiserum by affinity-chromatography using epitope-specific immunogen.
Conjugation:	Unconjugated
Storage:	Store at -20°C as received.
Stability:	Stable for 12 months from date of receipt.
Gene Name:	TPX2, microtubule nucleation factor
Database Link:	NP_036244 Entrez Gene 72119 Mouse Entrez Gene 22974 Human Q9ULW0
Synonyms:	C20orf1; C20orf2; DIL-2; DIL2; FLS353; GD:C20orf1; HCA519; HCTP4; p100; REPP86
Note:	DIL-2 antibody detects endogenous levels of total DIL-2 protein.
Protein Families:	Druggable Genome, Stem cell - Pluripotency



[View online »](#)

Product images:

Western blot analysis of extracts from Jurkat cells, using DIL-2 antibody. The lane on the right is treated with the synthesized peptide.



Immunohistochemistry analysis of paraffin-embedded human brain tissue using DIL-2 antibody. The picture on the right is treated with the synthesized peptide.