

## Product datasheet for **TA312747**

### AATF Rabbit Polyclonal Antibody

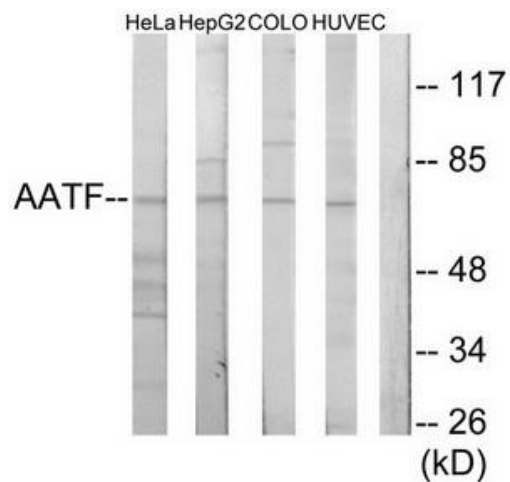
#### Product data:

Product Type:	Primary Antibodies
Applications:	WB
Recommended Dilution:	WB: 1:500~1:3000, ELISA: 1:10000
Reactivity:	Human, Mouse, Rat
Host:	Rabbit
Isotype:	IgG
Clonality:	Polyclonal
Immunogen:	The antiserum was produced against synthesized peptide derived from N-terminal of human AATF.
Formulation:	Phosphate buffered saline (without Mg <sup>2+</sup> and Ca <sup>2+</sup> ), pH 7.4, 150mM NaCl, 0.02% sodium azide and 50% glycerol.
Concentration:	lot specific
Purification:	The antibody was affinity-purified from rabbit antiserum by affinity-chromatography using epitope-specific immunogen.
Conjugation:	Unconjugated
Storage:	Store at -20°C as received.
Stability:	Stable for 12 months from date of receipt.
Gene Name:	apoptosis antagonizing transcription factor
Database Link:	<a href="#">NP_036270</a> <a href="#">Entrez Gene 56321 Mouse</a> <a href="#">Entrez Gene 114512 Rat</a> <a href="#">Entrez Gene 26574 Human</a> <a href="#">Q9NY61</a>
Synonyms:	BFR2; CHE-1; CHE1; DED
Note:	AATF antibody detects endogenous levels of total AATF protein.
Protein Families:	Druggable Genome, Stem cell - Pluripotency, Transcription Factors



[View online »](#)

## Product images:



Western blot analysis of extracts from HeLa cells, HepG2 cells, COLO205 cells and HUVEC cells, using AATF antibody. The lane on the right is treated with the synthesized peptide.