

Product datasheet for **TA312744**

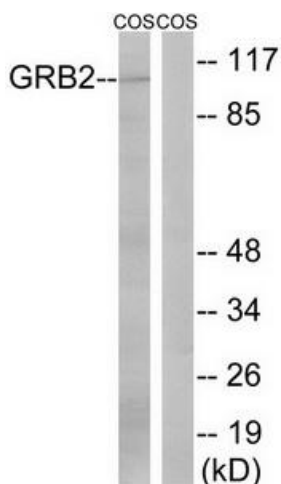
GAB2 Rabbit Polyclonal Antibody

Product data:

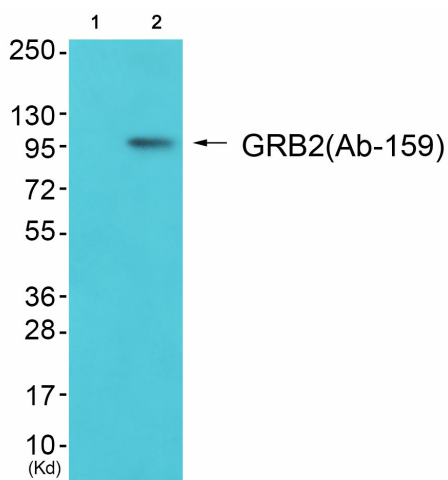
| | |
|-----------------------|---|
| Product Type: | Primary Antibodies |
| Applications: | IHC, WB |
| Recommended Dilution: | WB: 1:500~1:3000, IHC: 1:50~1:100, ELISA: 1:40000 |
| Reactivity: | Human, Mouse, Rat |
| Host: | Rabbit |
| Isotype: | IgG |
| Clonality: | Polyclonal |
| Immunogen: | The antiserum was produced against synthesized non-phosphopeptide derived from human GRB2 around the phosphorylation site of serine 159 (K-S-SP-A-P). |
| Formulation: | Phosphate buffered saline (without Mg ²⁺ and Ca ²⁺), pH 7.4, 150mM NaCl, 0.02% sodium azide and 50% glycerol. |
| Concentration: | lot specific |
| Purification: | The antibody was affinity-purified from rabbit antiserum by affinity-chromatography using epitope-specific immunogen. |
| Conjugation: | Unconjugated |
| Storage: | Store at -20°C as received. |
| Stability: | Stable for 12 months from date of receipt. |
| Gene Name: | GRB2 associated binding protein 2 |
| Database Link: | NP_036428 Entrez Gene 14389 MouseEntrez Gene 84477 RatEntrez Gene 9846 Human Q9UQC2 |
| Synonyms: | KIAA0571 |
| Note: | GRB2 (Ab-159) antibody detects endogenous levels of total GRB2 protein. |
| Protein Families: | Druggable Genome |
| Protein Pathways: | Chronic myeloid leukemia, Fc epsilon RI signaling pathway, Fc gamma R-mediated phagocytosis |



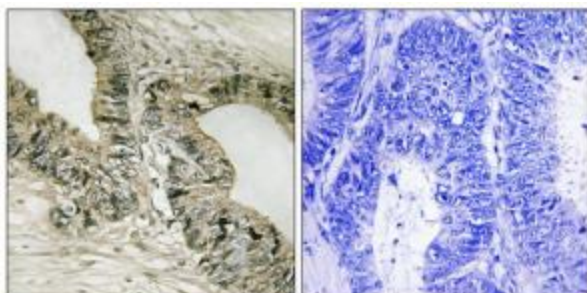
[View online »](#)

Product images:


Western blot analysis of extracts from COS cells, using GRB2 (Ab-159) antibody. The lane on the right is treated with the synthesized peptide.



Western blot analysis of extracts from 293 cells (Lane 2), using Gab2 (Ab-159) Antibody. The lane on the left is treated with synthesized peptide.



Immunohistochemistry analysis of paraffin-embedded human colon carcinoma tissue using GRB2 (Ab-159) antibody. The picture on the right is treated with the synthesized peptide.