

Product datasheet for TA312741

14 3 3 gamma (YWHAG) Rabbit Polyclonal Antibody

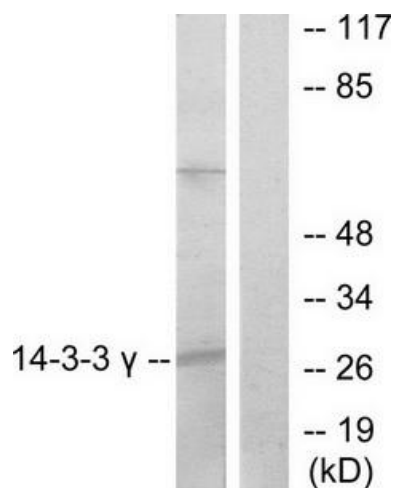
Product data:

Product Type:	Primary Antibodies
Applications:	IF, IHC, WB
Recommended Dilution:	WB: 1:500~1:3000, IHC: 1:50~1:100, IF: 1:100~1:500, ELISA: 1:1000
Reactivity:	Human, Mouse, Rat
Host:	Rabbit
Isotype:	IgG
Clonality:	Polyclonal
Immunogen:	The antiserum was produced against synthesized peptide derived from internal of human 14-3-3 ?.
Formulation:	Phosphate buffered saline (without Mg ²⁺ and Ca ²⁺), pH 7.4, 150mM NaCl, 0.02% sodium azide and 50% glycerol.
Concentration:	lot specific
Purification:	The antibody was affinity-purified from rabbit antiserum by affinity-chromatography using epitope-specific immunogen.
Conjugation:	Unconjugated
Storage:	Store at -20°C as received.
Stability:	Stable for 12 months from date of receipt.
Gene Name:	tyrosine 3-monooxygenase/tryptophan 5-monooxygenase activation protein gamma
Database Link:	NP_036611 Entrez Gene 22628 Mouse Entrez Gene 56010 Rat Entrez Gene 7532 Human P61981
Synonyms:	14-3-3GAMMA; PPP1R170
Note:	14-3-3 . antibody detects endogenous levels of total 14-3-3 . protein.
Protein Families:	Druggable Genome
Protein Pathways:	Cell cycle, Neurotrophin signaling pathway, Oocyte meiosis

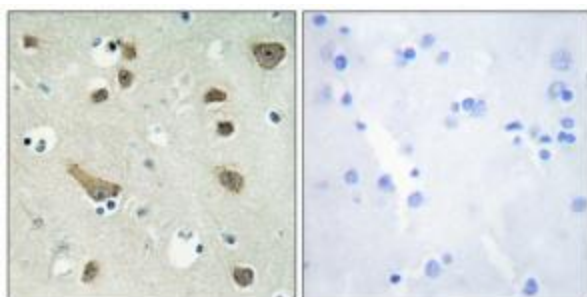


[View online »](#)

Product images:



Western blot analysis of extracts from K562 cells, treated with insulin (0.01U/ml, 15mins), using 14-3-3 γ antibody. The lane on the right is treated with the synthesized peptide.



Immunohistochemistry analysis of paraffin-embedded human brain tissue using 14-3-3 γ antibody. The picture on the right is treated with the synthesized peptide.



Immunofluorescence analysis of COS7 cells, using 14-3-3 γ antibody. The picture on the right is treated with the synthesized peptide.