

Product datasheet for **TA312738**

DNA Polymerase lambda (POLL) Rabbit Polyclonal Antibody

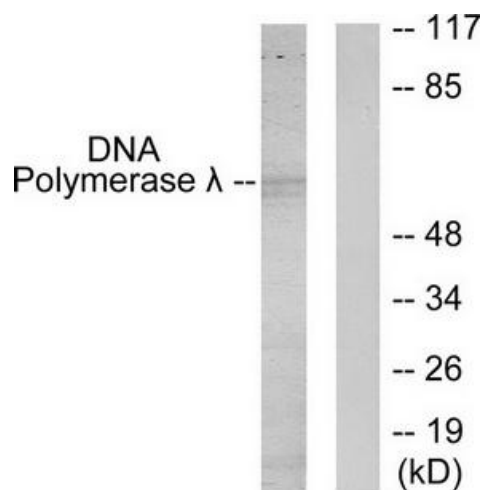
Product data:

Product Type:	Primary Antibodies
Applications:	WB
Recommended Dilution:	WB: 1:500~1:3000, ELISA: 1:5000
Reactivity:	Human, Mouse, Rat
Host:	Rabbit
Isotype:	IgG
Clonality:	Polyclonal
Immunogen:	The antiserum was produced against synthesized peptide derived from internal of human DNA Polymerase ?.
Formulation:	Phosphate buffered saline (without Mg ²⁺ and Ca ²⁺), pH 7.4, 150mM NaCl, 0.02% sodium azide and 50% glycerol.
Concentration:	lot specific
Purification:	The antibody was affinity-purified from rabbit antiserum by affinity-chromatography using epitope-specific immunogen.
Conjugation:	Unconjugated
Storage:	Store at -20°C as received.
Stability:	Stable for 12 months from date of receipt.
Gene Name:	polymerase (DNA) lambda
Database Link:	NP_037406 Entrez Gene 56626 MouseEntrez Gene 361767 RatEntrez Gene 27343 Human Q9UGP5
Synonyms:	BETAN; POLKAPPA
Note:	DNA Polymerase . antibody detects endogenous levels of total DNA Polymerase . protein.
Protein Families:	Druggable Genome
Protein Pathways:	Base excision repair, Non-homologous end-joining



[View online »](#)

Product images:



Western blot analysis of extracts from 293 cells, using DNA Polymerase λ antibody. The lane on the right is treated with the synthesized peptide.