

Product datasheet for **TA312737**

Epsin 1 (EPN1) Rabbit Polyclonal Antibody

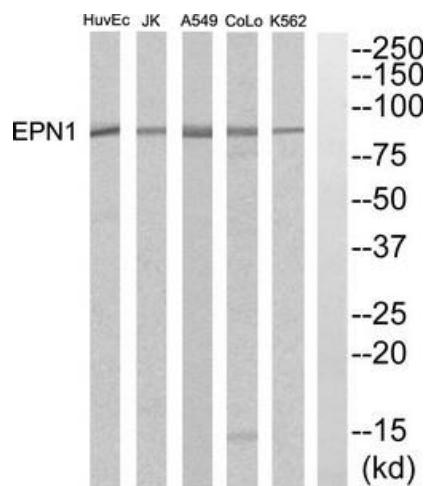
Product data:

Product Type:	Primary Antibodies
Applications:	WB
Recommended Dilution:	WB: 1:500~1:3000, ELISA: 1:10000
Reactivity:	Human, Mouse, Rat
Host:	Rabbit
Isotype:	IgG
Clonality:	Polyclonal
Immunogen:	The antiserum was produced against synthesized peptide derived from Internal of human EPN1.
Formulation:	Phosphate buffered saline (without Mg ²⁺ and Ca ²⁺), pH 7.4, 150mM NaCl, 0.02% sodium azide and 50% glycerol.
Concentration:	lot specific
Purification:	The antibody was affinity-purified from rabbit antiserum by affinity-chromatography using epitope-specific immunogen.
Conjugation:	Unconjugated
Storage:	Store at -20°C as received.
Stability:	Stable for 12 months from date of receipt.
Gene Name:	epsin 1
Database Link:	NP_037465 Entrez Gene 13854 MouseEntrez Gene 117277 RatEntrez Gene 29924 Human Q9Y6I3
Synonyms:	EH domain-binding mitotic phosphoprotein; epsin 1
Note:	EPN1 Antibody detects endogenous levels of total EPN1 protein
Protein Pathways:	Endocytosis



[View online »](#)

Product images:



Western blot analysis of extracts from K562 cells, Colo cells, A549 cells, JK cells and HuvEc cells, using EPN1 Antibody. The lane on the right is treated with the synthesized peptide.