

Product datasheet for **TA312729**

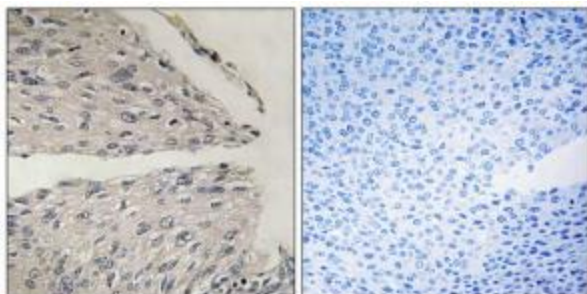
CIDE B (CIDEB) Rabbit Polyclonal Antibody

Product data:

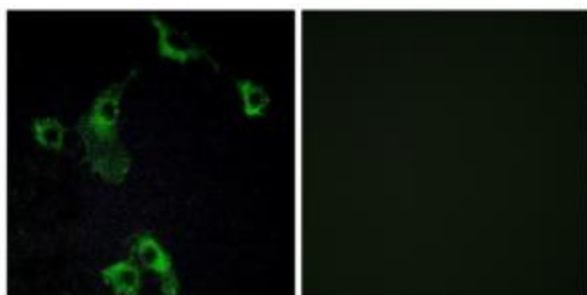
Product Type:	Primary Antibodies
Applications:	IF, IHC, WB
Recommended Dilution:	WB: 1:500~1:3000, IHC: 1:50~1:100, IF: 1:100~1:500, ELISA: 1:40000
Reactivity:	Human, Mouse
Host:	Rabbit
Isotype:	IgG
Clonality:	Polyclonal
Immunogen:	The antiserum was produced against synthesized peptide derived from internal of human CIDEB.
Formulation:	Phosphate buffered saline (without Mg ²⁺ and Ca ²⁺), pH 7.4, 150mM NaCl, 0.02% sodium azide and 50% glycerol.
Concentration:	lot specific
Purification:	The antibody was affinity-purified from rabbit antiserum by affinity-chromatography using epitope-specific immunogen.
Conjugation:	Unconjugated
Storage:	Store at -20°C as received.
Stability:	Stable for 12 months from date of receipt.
Gene Name:	cell death-inducing DFFA-like effector b
Database Link:	NP_055245 Entrez Gene 12684 Mouse Entrez Gene 27141 Human Q9UHD4
Synonyms:	cell death-inducing DFFA-like effector b
Note:	CIDEB antibody detects endogenous levels of total CIDEB protein
Protein Families:	Druggable Genome



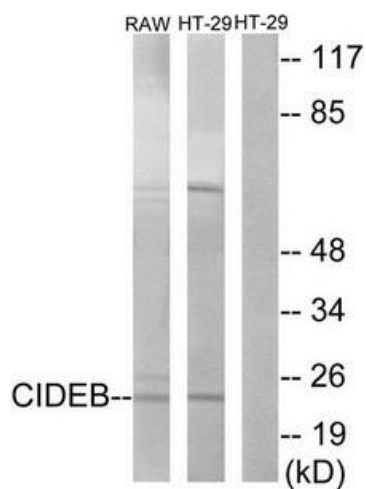
[View online »](#)

Product images:


Immunohistochemistry analysis of paraffin-embedded human cervix carcinoma tissue using CIDEB antibody. The picture on the right is treated with the synthesized peptide.



Immunofluorescence analysis of COS-7 cells, using CIDEB antibody. The picture on the right is treated with the synthesized peptide.



Western blot analysis of extracts from RAW264.7 cells and HT-29 cells, using CIDEB antibody. The lane on the right is treated with the synthesized peptide.