

Product datasheet for **TA312727**

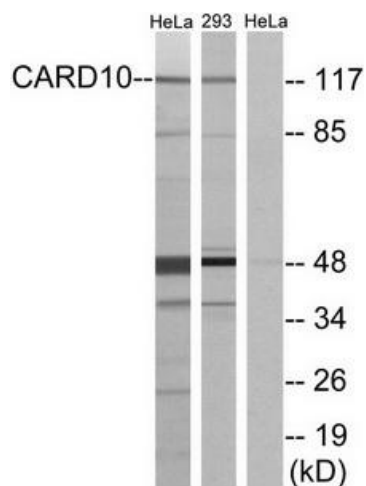
CARD10 Rabbit Polyclonal Antibody

Product data:

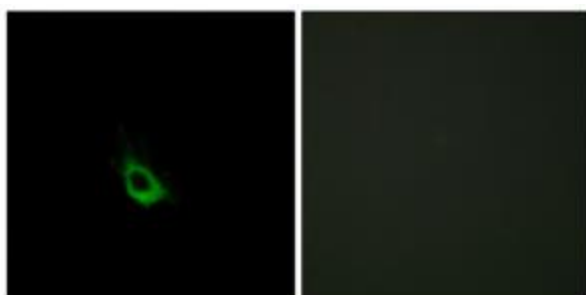
Product Type:	Primary Antibodies
Applications:	IF, WB
Recommended Dilution:	WB: 1:500~1:3000, IF: 1:100~1:500, ELISA: 1:1000
Reactivity:	Human, Mouse
Host:	Rabbit
Isotype:	IgG
Clonality:	Polyclonal
Immunogen:	The antiserum was produced against synthesized peptide derived from internal of human CARD10.
Formulation:	Phosphate buffered saline (without Mg ²⁺ and Ca ²⁺), pH 7.4, 150mM NaCl, 0.02% sodium azide and 50% glycerol.
Concentration:	lot specific
Purification:	The antibody was affinity-purified from rabbit antiserum by affinity-chromatography using epitope-specific immunogen.
Conjugation:	Unconjugated
Storage:	Store at -20°C as received.
Stability:	Stable for 12 months from date of receipt.
Gene Name:	caspase recruitment domain family member 10
Database Link:	NP_055365 Entrez Gene 105844 Mouse Entrez Gene 29775 Human Q9BWT7
Synonyms:	BIMP1; CARMA3
Note:	CARD10 antibody detects endogenous levels of total CARD10 protein.



[View online »](#)

Product images:

Western blot analysis of extracts from HeLa cells and 293 cells, using CARD10 antibody. The lane on the right is treated with the synthesized peptide.



Immunofluorescence analysis of HeLa cells, using CARD10 antibody. The picture on the right is treated with the synthesized peptide.