

Product datasheet for **TA312726**

BCAR1 Rabbit Polyclonal Antibody

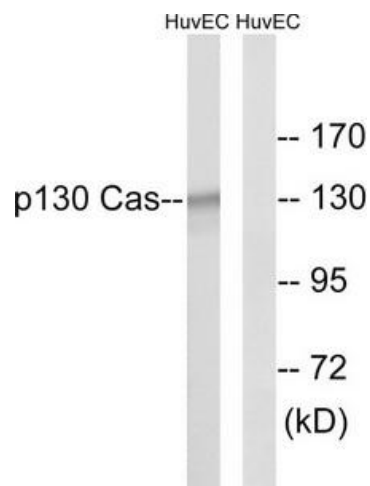
Product data:

Product Type:	Primary Antibodies
Applications:	IHC, WB
Recommended Dilution:	WB: 1:500~1:3000, IHC: 1:50~1:100, ELISA: 1:5000
Reactivity:	Human, Mouse, Rat
Host:	Rabbit
Isotype:	IgG
Clonality:	Polyclonal
Immunogen:	The antiserum was produced against synthesized non-phosphopeptide derived from human p130 Cas around the phosphorylation site of tyrosine 410 (G-V-T-A-V).
Formulation:	Phosphate buffered saline (without Mg ²⁺ and Ca ²⁺), pH 7.4, 150mM NaCl, 0.02% sodium azide and 50% glycerol.
Concentration:	lot specific
Purification:	The antibody was affinity-purified from rabbit antiserum by affinity-chromatography using epitope-specific immunogen.
Conjugation:	Unconjugated
Storage:	Store at -20°C as received.
Stability:	Stable for 12 months from date of receipt.
Gene Name:	BCAR1, Cas family scaffolding protein
Database Link:	NP_055382 Entrez Gene 12927 Mouse Entrez Gene 25414 Rat Entrez Gene 9564 Human P56945
Synonyms:	CAS; CAS1; CASS1; CRKAS; P130Cas
Note:	p130 Cas (Ab-410) antibody detects endogenous levels of total p130 Cas protein.
Protein Families:	Druggable Genome
Protein Pathways:	Chemokine signaling pathway, Focal adhesion, Leukocyte transendothelial migration, Regulation of actin cytoskeleton

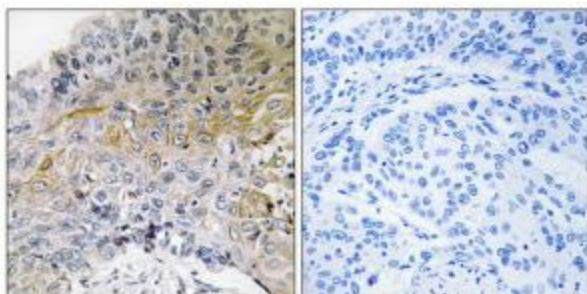


[View online »](#)

Product images:



Western blot analysis of extracts from NIH/3T3 cells, using p130 Cas (Ab-410) antibody (#TA312726). The lane on the right is treated with the synthesized peptide.



Immunohistochemical analysis of paraffin-embedded human breast carcinoma tissue using p130 Cas (Ab-410) antibody (#TA312726). The picture on the right is treated with the synthesized peptide.