

## Product datasheet for **TA312725**

### BCAR1 Rabbit Polyclonal Antibody

#### Product data:

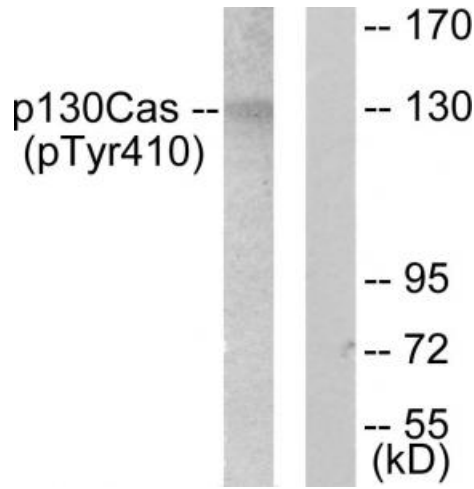
Product Type:	Primary Antibodies
Applications:	IHC, WB
Recommended Dilution:	WB: 1:500~3000, IHC: 1:50~1:100, ELISA: 1:5000
Reactivity:	Human, Mouse, Rat
Modifications:	Phospho-specific
Host:	Rabbit
Isotype:	IgG
Clonality:	Polyclonal
Immunogen:	The antiserum was produced against synthesized phosphopeptide derived from human p130 Cas around the phosphorylation site of tyrosine 410 (G-V-YP-A-V).
Formulation:	Phosphate buffered saline (without Mg <sup>2+</sup> and Ca <sup>2+</sup> ), pH 7.4, 150mM NaCl, 0.02% sodium azide and 50% glycerol.
Concentration:	lot specific
Purification:	The antibody was affinity-purified from rabbit antiserum by affinity-chromatography using epitope-specific immunogen.
Conjugation:	Unconjugated
Storage:	Store at -20°C as received.
Stability:	Stable for 12 months from date of receipt.
Gene Name:	BCAR1, Cas family scaffolding protein
Database Link:	<a href="#">NP_055382</a> <a href="#">Entrez Gene 12927 Mouse</a> <a href="#">Entrez Gene 25414 Rat</a> <a href="#">Entrez Gene 9564 Human</a> <a href="#">P56945</a>
Synonyms:	CAS; CAS1; CASS1; CRKAS; P130Cas
Note:	p130 Cas (Phospho-Tyr410) antibody detects endogenous levels of p130 Cas only when phosphorylated at tyrosine 410.
Protein Families:	Druggable Genome



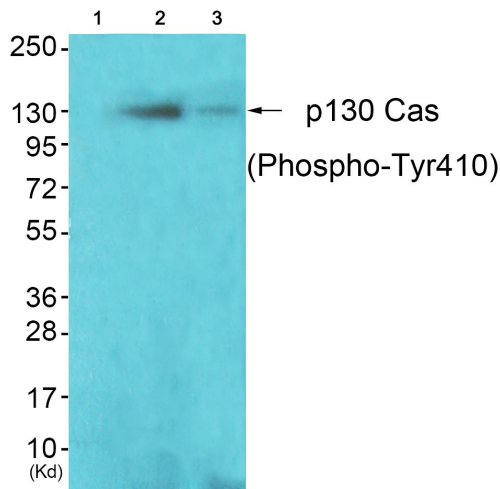
[View online »](#)

**Protein Pathways:** Chemokine signaling pathway, Focal adhesion, Leukocyte transendothelial migration, Regulation of actin cytoskeleton

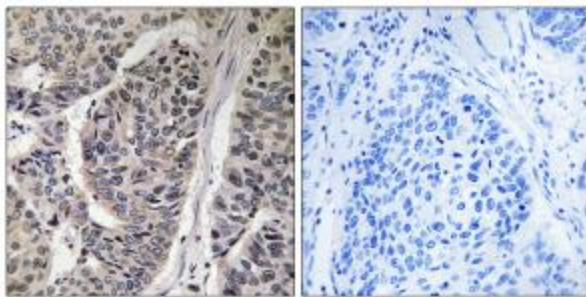
**Product images:**



Western blot analysis of extracts from NIH/3T3 cells, using p130 Cas (Phospho-Tyr410) antibody (#TA312725). The lane on the right is treated with the synthesized peptide.



Western blot analysis of extracts from K562 cells (Lane 2) and 3T3 cells (Lane 3), using P130 Cas (Phospho-Tyr410) Antibody. The lane on the left is treated with synthesized peptide.



Immunohistochemical analysis of paraffin-embedded human breast carcinoma tissue, using p130 Cas (Phospho-Tyr410) antibody (#TA312725). The picture on the right is treated with the synthesized peptide.