

Product datasheet for **TA312721S**

Smad Interacting Protein 1 (ZEB2) Rabbit Polyclonal Antibody

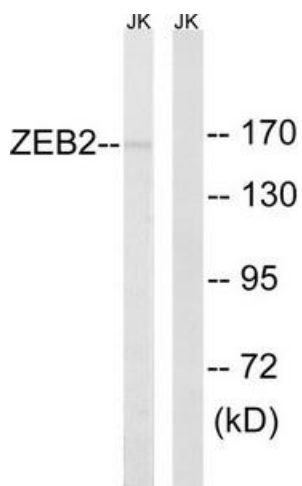
Product data:

Product Type:	Primary Antibodies
Applications:	IHC, WB
Recommended Dilution:	WB: 1:500~1:3000, IHC: 1:50~1:100, ELISA: 1:10000
Reactivity:	Human, Mouse
Host:	Rabbit
Isotype:	IgG
Clonality:	Polyclonal
Immunogen:	The antiserum was produced against synthesized peptide derived from internal of human ZEB2.
Formulation:	Phosphate buffered saline (without Mg ²⁺ and Ca ²⁺), pH 7.4, 150mM NaCl, 0.02% sodium azide and 50% glycerol.
Concentration:	lot specific
Purification:	The antibody was affinity-purified from rabbit antiserum by affinity-chromatography using epitope-specific immunogen.
Conjugation:	Unconjugated
Storage:	Store at -20°C as received.
Stability:	Stable for 12 months from date of receipt.
Gene Name:	zinc finger E-box binding homeobox 2
Database Link:	NP_055610 Entrez Gene 24136 Mouse Entrez Gene 9839 Human O60315
Synonyms:	HSPC082; SIP-1; SIP1; SMADIP1; ZFHX1B
Note:	ZEB2 antibody detects endogenous levels of total ZEB2 protein.
Protein Families:	Druggable Genome, Transcription Factors



[View online »](#)

Product images:



Western blot analysis of extracts from HepG2 cells, using ZEB2 antibody. The lane on the right is treated with the synthesized peptide.

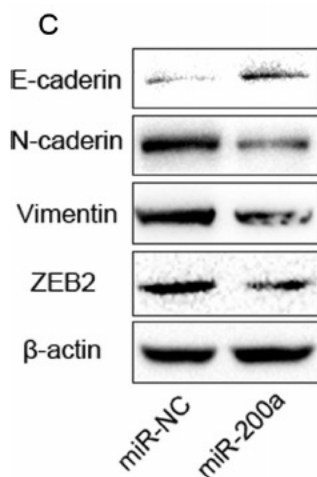
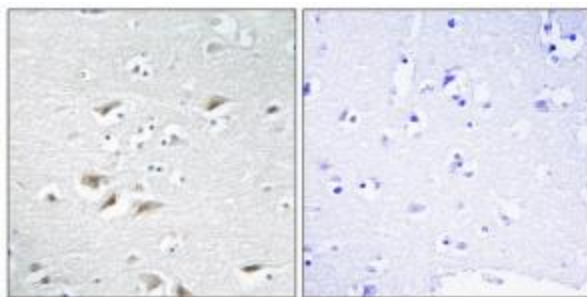


Figure from citation: Western blot analysis of ZEB2 protein level by using anti-ZEB1 antibody in LCSCs transfected with miR-200a mimic. Dilution: 1:1000 [View Citation](#)



Immunohistochemistry analysis of paraffin-embedded human brain tissue using ZEB2 antibody. The picture on the right is treated with the synthesized peptide.