

## Product datasheet for **TA312714**

### POFUT1 Rabbit Polyclonal Antibody

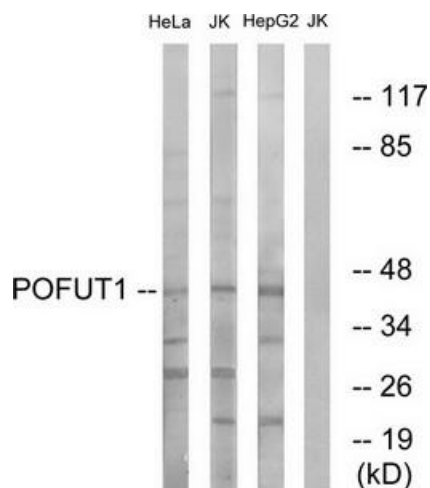
#### Product data:

Product Type:	Primary Antibodies
Applications:	IHC, WB
Recommended Dilution:	WB: 1:500~1:3000, IHC: 1:50~1:100, ELISA: 1:40000
Reactivity:	Human, Mouse, Rat
Host:	Rabbit
Isotype:	IgG
Clonality:	Polyclonal
Immunogen:	The antiserum was produced against synthesized peptide derived from internal of human POFUT1.
Formulation:	Phosphate buffered saline (without Mg <sup>2+</sup> and Ca <sup>2+</sup> ), pH 7.4, 150mM NaCl, 0.02% sodium azide and 50% glycerol.
Concentration:	lot specific
Purification:	The antibody was affinity-purified from rabbit antiserum by affinity-chromatography using epitope-specific immunogen.
Conjugation:	Unconjugated
Storage:	Store at -20°C as received.
Stability:	Stable for 12 months from date of receipt.
Gene Name:	protein O-fucosyltransferase 1
Database Link:	<a href="#">NP_056167</a> <a href="#">Entrez Gene 140484 MouseEntrez Gene 311551 RatEntrez Gene 23509 Human Q9H488</a>
Synonyms:	DDD2; FUT12; O-Fuc-T; O-FucT-1; O-FUT; OFUCT1
Note:	POFUT1 antibody detects endogenous levels of total POFUT1 protein.
Protein Families:	Druggable Genome, Transcription Factors

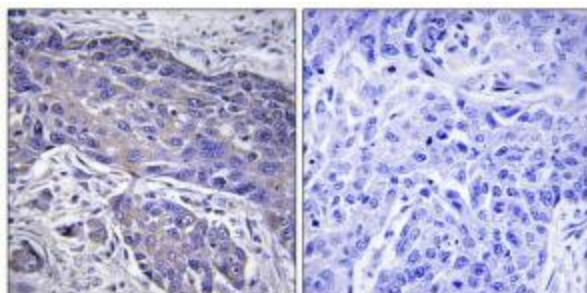


[View online »](#)

Product images:



Western blot analysis of extracts from HeLa cells, Jurkat cells and HepG2 cells, using POFUT1 antibody. The lane on the right is treated with the synthesized peptide.



Immunohistochemistry analysis of paraffin-embedded human lung carcinoma tissue using POFUT1 antibody. The picture on the right is treated with the synthesized peptide.