

Product datasheet for **TA312710**

Mitochondrial ribosomal protein L11 (MRPL11) Rabbit Polyclonal Antibody

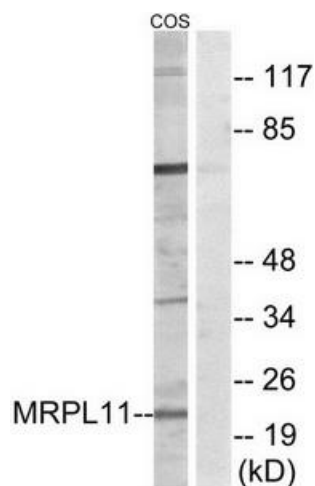
Product data:

Product Type:	Primary Antibodies
Applications:	IF, IHC, WB
Recommended Dilution:	WB: 1:500~1:3000, IHC: 1:50~1:100, IF: 1:100~1:500, ELISA: 1:40000
Reactivity:	Human
Host:	Rabbit
Isotype:	IgG
Clonality:	Polyclonal
Immunogen:	The antiserum was produced against synthesized peptide derived from internal of human MRPL11.
Formulation:	Phosphate buffered saline (without Mg ²⁺ and Ca ²⁺), pH 7.4, 150mM NaCl, 0.02% sodium azide and 50% glycerol.
Concentration:	lot specific
Purification:	The antibody was affinity-purified from rabbit antiserum by affinity-chromatography using epitope-specific immunogen.
Conjugation:	Unconjugated
Storage:	Store at -20°C as received.
Stability:	Stable for 12 months from date of receipt.
Gene Name:	mitochondrial ribosomal protein L11
Database Link:	NP_057134 Entrez Gene 65003 Human Q9Y3B7
Synonyms:	CGI-113; L11MT; MRP-L11
Note:	MRPL11 antibody detects endogenous levels of total MRPL11 protein.

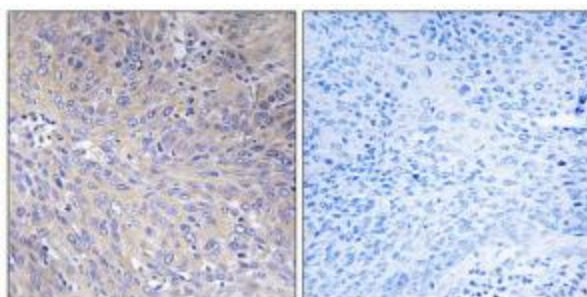


[View online »](#)

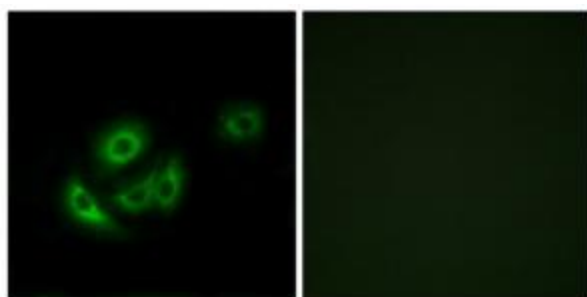
Product images:



Western blot analysis of extracts from COS cells, using MRPL11 antibody. The lane on the right is treated with the synthesized peptide.



Immunohistochemistry analysis of paraffin-embedded human cervix carcinoma tissue using MRPL11 antibody. The picture on the right is treated with the synthesized peptide.



Immunofluorescence analysis of A549 cells, using MRPL11 antibody. The picture on the right is treated with the synthesized peptide.