

Product datasheet for **TA312700**

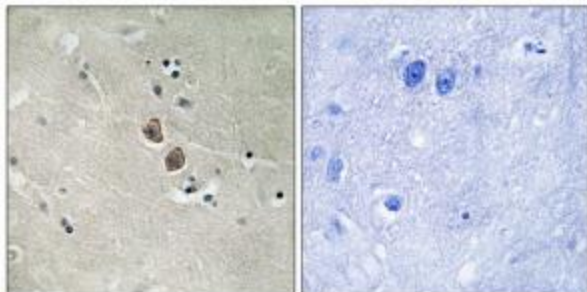
NPTN Rabbit Polyclonal Antibody

Product data:

Product Type:	Primary Antibodies
Applications:	IHC
Recommended Dilution:	IHC: 1:50~1:100, ELISA: 1:5000
Reactivity:	Human, Mouse
Host:	Rabbit
Isotype:	IgG
Clonality:	Polyclonal
Immunogen:	The antiserum was produced against synthesized peptide derived from internal of human NPTN.
Formulation:	Phosphate buffered saline (without Mg ²⁺ and Ca ²⁺), pH 7.4, 150mM NaCl, 0.02% sodium azide and 50% glycerol.
Concentration:	lot specific
Purification:	The antibody was affinity-purified from rabbit antiserum by affinity-chromatography using epitope-specific immunogen.
Conjugation:	Unconjugated
Storage:	Store at -20°C as received.
Stability:	Stable for 12 months from date of receipt.
Gene Name:	neuroplastin
Database Link:	NP_059429 Entrez Gene 20320 Mouse Entrez Gene 27020 Human Q9Y639
Synonyms:	GP55; GP65; np55; np65; SDFR1; SDR1
Note:	The antibody was affinity-purified from rabbit antiserum by affinity-chromatography using epitope-specific immunogen.
Protein Families:	Druggable Genome, Transmembrane



[View online »](#)

Product images:

Immunohistochemistry analysis of paraffin-embedded human brain tissue using NPTN antibody. The picture on the right is treated with the synthesized peptide.